

# FLORIDA DEPARTMENT OF CORRECTIONS

## Florida's Criminal Punishment Code: A Comparative Assessment

September 2018



*Julie L. Jones, Secretary*

*A report to the Florida Legislature  
detailing Florida's Criminal Punishment Code*

# TABLE OF CONTENTS

<b>Executive Summary</b> .....	3
<b>I. Introduction</b> .....	4
1. Overview of Florida’s Sentencing Policies .....	5-11
2. Narrative on Introductory Statistics.....	12
3. Introductory Statistics.....	13-19
<b>II. Offense to Sentence Date Lag Time Comparison</b> .....	20
1. Narrative on the “Lag” Issue .....	21-22
2. Comparative Statistics .....	23-27
<b>III. Comparative Description</b> .....	28
1. Narrative on Comparative Statistics .....	29-32
2. Recommended Sanction and Sanction Imposed .....	33-36
3. Sanction Imposed by Circuit/County .....	37-45
4. Sanction Imposed by Offense Type/Severity Level.....	46-48
5. Prior and Additional Offenses .....	49-51
6. Mitigation .....	52-55
<b>Appendices</b>	
Total Admissions to Prison by County of Commitment .....	57
Total Admissions to Prison by Circuit of Commitment .....	58
Criminal Punishment Code Scoresheet.....	59-61

# Florida's Criminal Punishment Code: A Comparative Assessment

## Offenses Committed On or After October 1, 1998

### Executive Summary

In 1997, the Florida Legislature created a new sentencing structure, the Florida Criminal Punishment Code (“Code”). The Code is Florida’s primary sentencing policy. It is unique in that it has features of both structured and unstructured sentencing policies.

From a structured sentencing perspective, the Code provides for a uniform evaluation of relevant factors present at sentencing, such as the offense before the court for sentencing, prior criminal record, victim injury, and others. It also provides for the lowest permissible sentence that the court must impose in any given sentencing event, absent a valid reason for departure.

The Code also contains some characteristics of unstructured sentencing, such as broad judicial discretion and the allowance for the imposition of lengthy terms of incarceration.

The Code is effective for offenses committed on or after October 1, 1998 and is unlike the state’s preceding sentencing guidelines, which provided for narrow ranges of permissible sentences in all non-capital sentencing events.

The intent of this report is to address the requirement set forth in Florida Statute 921.002(4)(a) to analyze sentencing events under the Florida Criminal Punishment Code. Each year, the Department of Corrections is required to report on trends in sentencing practices and sentencing score thresholds, and provide an analysis of the sentencing factors considered by the courts. **In this report, a comparison is made between the Criminal Punishment Code sentences received in FY 2016-2017 and FY 2017-2018.**

Since January 1, 1994, the Florida Department of Corrections has collected over 2.7 million scoresheets on felony offenders sentenced in Florida courts under the state’s Sentencing Guidelines and Criminal Punishment Code. This report describes the 126,656 Criminal Punishment Code scoresheets with sentence dates in FY 2017-2018 received by the Florida Department of Corrections through September 1, 2018, for felony offenses committed on or after October 1, 1998. It also compares 85,444 Criminal Punishment Code scoresheets received by the Florida Department of Corrections through September 1, 2018, for felony offenses committed on or after October 1, 2015 and sentence dates in Fiscal Year 2017-2018 with 81,525 Criminal Punishment Code scoresheets with offense dates on or after October 1, 2015 and sentence dates in Fiscal Year 2016-2017.

# PART I

## INTRODUCTION

# **Overview of Florida's Sentencing Policies**

## **History of Sentencing Policy**

### **Unstructured Sentencing**

Prior to October 1, 1983, courts sentenced in accordance with the provisions of law that permitted a wide range of judicial discretion in the sentencing decision. Sanctions ranged from a fine up to state prison incarceration. The statutory maximum penalties of incarceration in state prison were:

- Five years for a felony of the third degree;
- Fifteen years for a felony of the second degree;
- Thirty years for a felony of the first degree, and;
- Life for a life felony.

This was a form of an indeterminate sentencing policy because most offenders sentenced to prison were, by law, parole eligible. Parole was a discretionary early release policy, which obviously had a significant impact upon both the percentage and the actual amount of time served.

### **Structured Sentencing/Sentencing Guidelines**

The Florida Sentencing Guidelines represent the state's structured policy with respect to the sentencing of non-capital felony offenders. There are three distinct versions of the guidelines currently in operation in Florida. They each:

- Provide for a uniform set of standards to guide the sentencing court in sentencing decisions;
- Evaluate relevant factors present at sentencing relating to the offense or offenses and the defendant's prior criminal behavior;
- Are attempts to provide for "truth in sentencing" and eliminate unwarranted disparity in sentencing decisions;
- Focus on ensuring that the punishment is commensurate with the offenses before the court for sentencing, and;
- Are mathematically based and provide a means to address several policy areas.

Every assessment of points reflects a policy statement regarding the relative severity of a criminal behavior. Each policy is represented on its respective scoresheet, which must be completed for each felony defendant prior to sentencing.

### **The 1983 Sentencing Guidelines**

Due to concerns regarding actual and percent of time served as well as concerns regarding a lack of uniformity in sentencing, the 1983 Florida Sentencing Guidelines were enacted October 1, 1983 and parole eligibility was abolished for almost all offenses committed after that date. These guidelines are currently in effect for all non-capital felony offenses that were committed on or after October 1, 1983 and before January 1, 1994.

The 1983 Sentencing Guideline structure was comprised of nine separate worksheets for specified offense categories such as murder, sexual offenses, drug offenses, etc. All offenses were contained in one of these categories.

Within each worksheet, points were assessed for offenses to be sentenced and prior record offenses based on the number of offenses and each offense's felony degree. Assessments were made for legal status and victim injury. Total scores fell into sentencing ranges or cells, for each worksheet. The least severe cell provided for a non-state prison sanction and the most severe cell provided for 27 years to life in prison. Departure sentences were permissible, as long as, written reasons were provided.

Several factors eventually eroded the integrity of the "truth in sentencing" aspect of the 1983 sentencing guidelines. Some of these factors included an epidemic of "crack" cocaine-related offense activity, which resulted in an unanticipated impact upon correctional resources, the passage of unfunded mandatory minimum sentence legislation, and significant growth in the population of the State of Florida.

As a result of these and other factors, the percentage of time served and actual time served declined. By 1989, the average percentage of time served was 34 percent. This lack of system integrity was the impetus for the creation of a new sentencing guideline structure.

## **The 1994 Sentencing Guidelines**

The 1994 Sentencing Guidelines were enacted through the passage of the “Safe Streets Act.” These guidelines were created with the recognition that prison resources are finite and that the use of state incarceration should be focused upon offenders who commit serious or violent offenses, or who offend repetitively. The 1994 guidelines repealed the grant of basic gain time, evidencing the legislature’s re-commitment to “truth in sentencing.” These sentencing guidelines are in effect for all non-capital felony offenses committed on or after January 1, 1994 and before October 1, 1995.

The structure of the 1994 Sentencing Guidelines has little similarity to the 1983 structure. The structure created attempted to resolve some of the problems inherent in the preceding structure, such as the nine separate worksheets, the lack of offense-specific detail and the issue of grouping crimes by category. The structure of the 1994 guidelines:

- Ranks all non-capital felonies in one of 10 offense severity levels. Level 1 is the least severe ranking and 10 reflects the most serious felonies.
- Each of the rankings has an associated point value in each of three elements subject to scoring: primary offense, additional offense(s), and prior record. Point values escalate as the rank increases. Every offense scored is provided its corresponding point value in these areas, with the emphasis of points lying in the area of the primary offense.
- Includes other policy levels through an assessment of points for a variety of other factors such as: victim injury, legal status, supervision violations, and others.

Under the 1994 structure, the total guidelines score determines the sanction and a range of length of sanction when state prison is applicable. There are basically three categories of sanction based upon total scores. There are ranges of score which:

1. Mandate a non-state prison sanction when the total score is 40 points or less.

2. Provide for discretionary prison or non-state prison sanction when the total score is greater than forty and less than 52 points.
3. Mandate a state prison sanction when the total score exceeds 52 points.

The length of prison is determined by subtracting 28 from the total sentence points to derive the total prison months.

The court has the discretion to increase or decrease the sanction by 25%. This provided for a relatively narrow range for the imposition of a guideline sentence.

### **The 1995 Sentencing Guidelines**

The 1994 Sentencing Guidelines were significantly amended in 1995 through the passage of the Crime Control Act of 1995. The basic structure of the 1994 sentencing guidelines remained; however, point values were increased in a variety of areas and additional policy levers were created to provide for greater sanctions. The 1995 guidelines are in effect for offenses committed on or after October 1, 1995 through September 30, 1998.

The Higgs ruling stated that the use of the 1995 Sentencing Guidelines for offenses between October 1, 1995 and May 24, 1997 is unconstitutional. However, the 1995 Sentencing Guidelines are used for offense dates between May 25, 1997 and September 30, 1998.

The guidelines were slightly modified in both 1996 and 1997, again providing for increased sanctions and sanction length in certain instances.

### **The Criminal Punishment Code**

The Criminal Punishment Code became effective for offenses committed on or after October 1, 1998. The guidelines are repealed for all offenses committed on or after October 1, 1998 but remain in effect for offenses committed prior to this date. The Code contains features of both structured and unstructured sentencing policies. It maintains many of the goals of guidelines sentencing. Compared to the guidelines however, the Code allows for greater upward discretion in sentencing, provides for increased penalties, and lowers mandatory prison thresholds.



- The Code significantly alters the sentencing policy in a variety of respects. One of the most notable changes is the significant broadening of upward discretion in the sentencing policy. Under the sentencing guidelines, the upward discretion was 25 percent above the state prison months determined by the calculation. Under the Code, the maximum sentence for any felony offense is determined by the statutory maximums as provided in Florida Statute (F.S.) 775.082.

<u>Felony Degree</u>	<u>Years in Prison</u>
Life Felony	Up to Life
1 <sup>st</sup>	Up to 30
2 <sup>nd</sup>	Up to 15
3 <sup>rd</sup>	Up to 5

- This has two effects that are divergent from the preceding guidelines. First, all felony offenders have the potential to receive a prison sentence, whereas many under the guidelines were by policy excluded from such a possibility. Second, the maximums of F. S. 775.082 usually will provide for far greater sentence lengths than were permissible under the guidelines.
- Another significant change is the determination when a prison sentence becomes mandatory under the new sentencing policy. The basic structure of the sentencing policy has not changed with respect to point determinations. Sentencing point thresholds for sentence calculations have, however, undergone significant revisions.
  1. If total points are equal to or less than 44, the lowest permissible sentence is a non-state prison sanction. (However, state prison up to the statutory maximum can be imposed.)
  2. If total points exceed 44, the minimum sentence is established by taking the total point value subtracting 28 and decreasing the remaining value by 25%. This end result value is the lowest permissible prison sentence in months.

This means that only those offenders scoring 44 or fewer points may receive a non-state prison sanction under the code. All others must receive a state prison sanction, absent downward departure from this structure. The threshold under the guidelines for mandatory prison incarceration was 52 points.

## **Department of Corrections Responsibilities**

The Department was provided a variety of responsibilities regarding the sentencing policy with respect to the 1994 and subsequent versions of the law. Florida Statute 921 requires the Department to:

- Develop the scoresheet and any revisions of the scoresheet for approval by the Supreme Court and supply Sentencing Guidelines and Criminal Punishment Code scoresheets to the appropriate criminal justice entities in the state;
- Prior to July 1, 2001, the Department had a coequal responsibility to prepare scoresheets with the state attorneys. However, the Department of Corrections continued to complete scoresheets which had been ordered by the courts prior to July 1, 2001. In addition, there were transitional issues involved in transferring this responsibility to the state attorneys. This resulted in 9.7% of scoresheets received during FY 2001-02 having been prepared by the Department of Corrections;
- Assist the Criminal Justice Estimating Conference in estimating correctional impact of proposed changes to the code;
- Provide the Legislature by October 1 of each year a report detailing the rate of compliance of each Judicial Circuit in providing scoresheets to the Department; and,
- Provide the Legislature an annual report detailing trends in sentencing and an analysis thereof by October 1 of each year.

### **The SAGES (Sentencing Analysis and Guidelines Entry Systems) database**

The Department developed a database in 1994 to be used as a mechanism to allow for the storage of completed scoresheets and allow for more accurate, legible and efficient scoresheet preparation.

**This report is derived primarily from the information on sentencing scoresheets received by the Department from the clerks of the courts and entered into SAGES.**

The following should be considered when evaluating this and other information derived from this database:

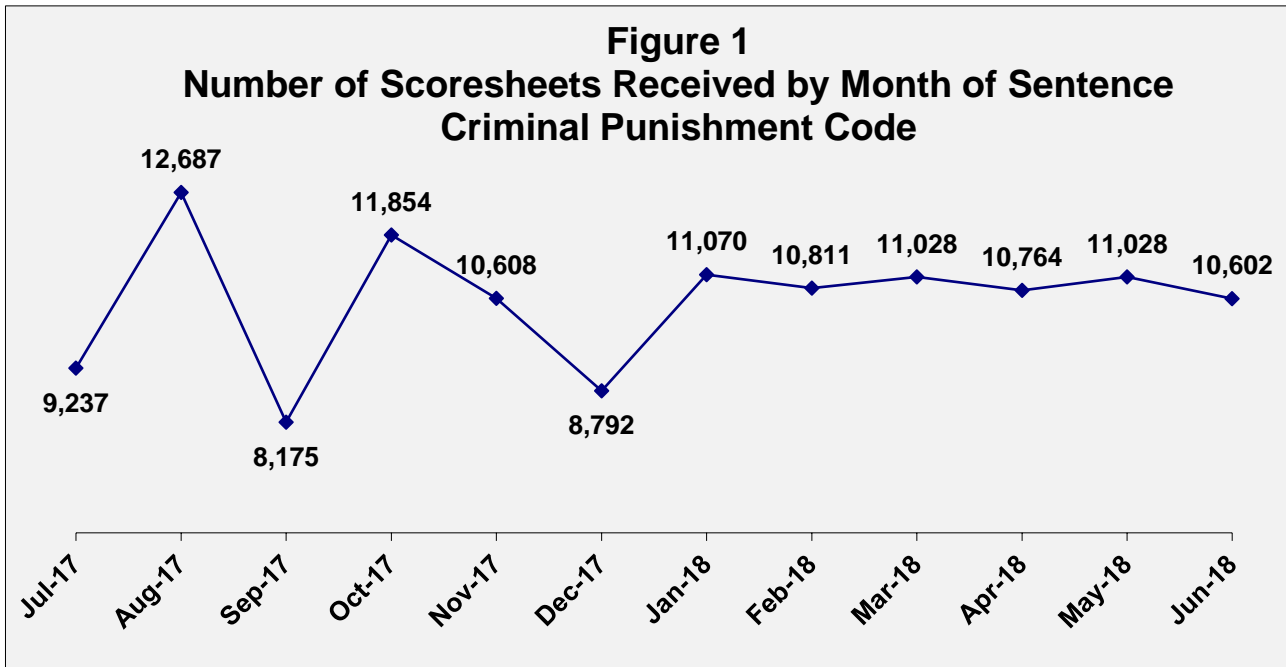
- The information is compiled from a database containing sentencing scoresheets received by the Department of Corrections for offenses with dates of commission on or after January 1, 1994. The information is based on the scoresheets in the database with dates of sentence in Fiscal Year 2017-2018 and offenses on or after October 1, 1998, entered as of September 1, 2018.
- Because the rate of scoresheet submissions is never 100%, there is always information missing that could potentially affect the analysis. When this report was run, the statewide compliance rate was **93.3%** for Fiscal Year 2017-2018.
- Though the Department retrieves and includes in the database omitted information from a scoresheet that is critical, no effort is made to correct preparation error or errors recorded on scoresheets regarding the sentence imposed. The Department does not have the authority to amend an official court document. Conversely, there is a responsibility to record the information as received.

## **Introductory Statistics**

**FACT:** *There were 126,656 Punishment Code scoresheets with offense dates on or after October 1, 1998 with sentencing dates during FY 2017-18 entered into the sentencing scoresheet database, as of September 1, 2018.*

### **FINDINGS:**

- The number of Code scoresheets received by month of sentence fluctuated from a high of 12,687 to a low of 8,175 from July 1, 2017 to June 30, 2018 (Figure 1).
- For the time period July 2017 through June 2018, Code scoresheets represent the majority (99.9%) of the total scoresheet submissions. Throughout the fiscal year, more than ninety-nine percent of the scoresheets represented sentencing events under the Florida Criminal Punishment Code (Table 2).
- About a quarter (20.6%) of the offenders sentenced under the Code were considered “youthful offenders” at the time of sentencing (Table 3). Of the 1,778 true juveniles (under 18 at the time of their offense) transferred to adult court under the Code, 690 (38.8%) of the offenders were age sixteen or younger (Table 4).
- There were 825 juveniles sentenced under the Code for violent offenses, including murder/manslaughter, sex offenses, robbery, and other violent personal offenses. These violent offenses represent 46.4% of all offenses of juveniles (Table 4). Of the 825 violent juvenile offenders, 510 (61.8%) received a state prison sanction (Table 5).
- The gender and race distributions of offenders sentenced under the Code changes only slightly from previous years sentencing events. Approximately seventy seven percent (77%) of all scoresheets were for male offenders (Table 6), and 63% were for white offenders (Table 7).



**Table 1**  
**Scoresheets Received by Circuit**  
**Fiscal Year 2017-2018**  
**Criminal Punishment Code**

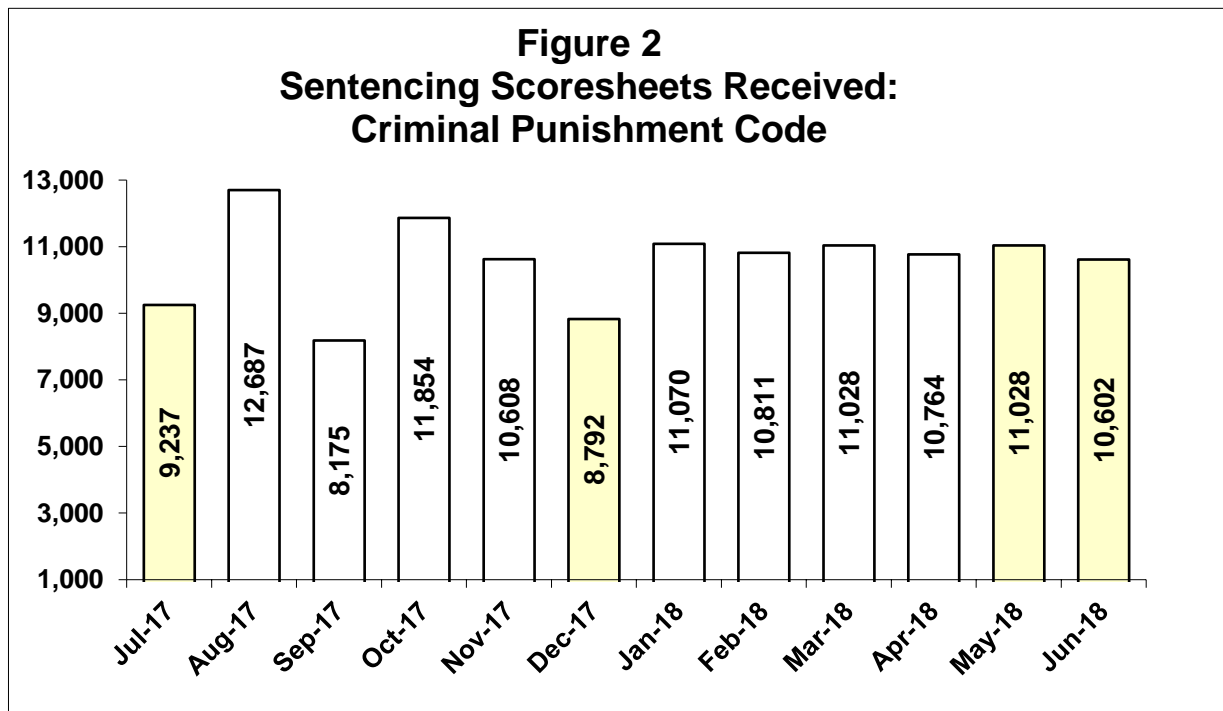
Circuit of Sentence	Total	
	Number	Percent
01 (Pensacola)	8,691	6.9%
02 (Tallahassee)	3,682	2.9%
03 (Lake City)	2,731	2.2%
04 (Jacksonville)	6,561	5.2%
05 (Tavares)	9,641	7.6%
06 (Clearwater)	11,237	8.9%
07 (Daytona Beach)	6,849	5.4%
08 (Gainesville)	3,702	2.9%
09 (Orlando)	11,770	9.3%
10 (Bartow)	6,454	5.1%
11 (Miami)	6,857	5.4%
12 (Sarasota)	5,374	4.2%
13 (Tampa)	8,628	6.8%
14 (Panama City)	5,121	4.0%
15 (West Palm Beach)	4,882	3.9%
16 (Key West)	865	0.7%
17 (Ft. Lauderdale)	5,985	4.7%
18 (Sanford)	7,196	5.7%
19 (Ft. Pierce)	4,167	3.3%
20 (Ft. Myers)	6,263	4.9%
<b>Total</b>	<b>126,656</b>	<b>100.0%</b>

**Table 2**  
**Sentencing Scoresheets Received by Month of Sentence\***  
**Fiscal Year 2017-2018**

Month of Sentence	1994 Sentencing Guidelines Scoresheet		1995 Sentencing Guidelines Scoresheet**		Criminal Punishment Code Scoresheet		Total	
	Count	Percentage	Count	Percentage	Count	Percentage	Count	Percentage
July 2017	2	0.0%	8	0.1%	9,237	99.9%	9,247	7.3%
August 2017	5	0.0%	8	0.1%	12,687	99.9%	12,700	10.0%
September 2017	1	0.0%	7	0.1%	8,175	99.9%	8,183	6.5%
October 2017	1	0.0%	6	0.1%	11,854	99.9%	11,861	9.4%
November 2017	7	0.1%	8	0.1%	10,608	99.9%	10,623	8.4%
December 2017	2	0.0%	33	0.4%	8,792	99.6%	8,827	7.0%
January 2018	2	0.0%	11	0.1%	11,070	99.9%	11,083	8.7%
February 2018	3	0.0%	3	0.0%	10,811	99.9%	10,817	8.5%
March 2018	2	0.0%	5	0.0%	11,028	99.9%	11,035	8.7%
April 2018	2	0.0%	7	0.1%	10,764	99.9%	10,773	8.5%
May 2018	3	0.0%	5	0.0%	11,028	99.9%	11,036	8.7%
June 2018	4	0.0%	6	0.1%	10,602	99.9%	10,612	8.4%
<b>Total</b>	<b>34</b>	<b>0.0%</b>	<b>107</b>	<b>0.1%</b>	<b>126,656</b>	<b>99.9%</b>	<b>126,797</b>	<b>100.0%</b>

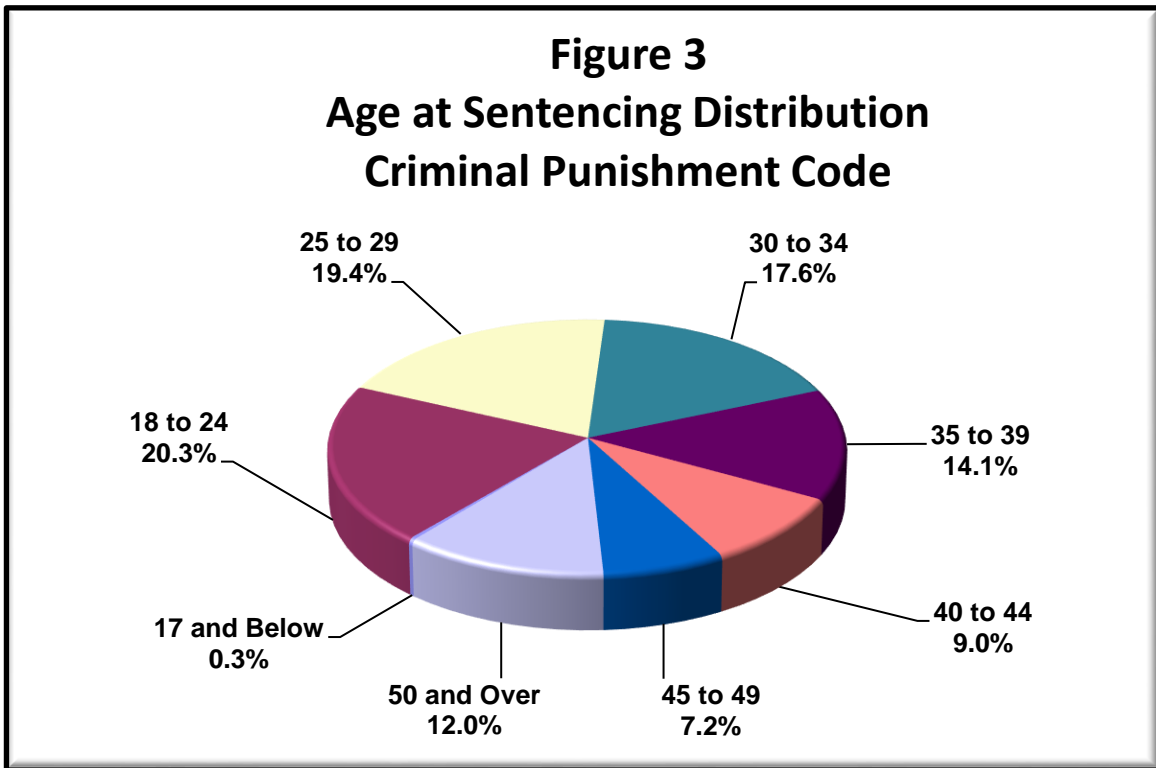
\* Total number of scoresheets, including those with offense dates between October 1, 1995 and May 24, 1997.

\*\* Offense dates between May 25, 1997 and September 30, 1998.



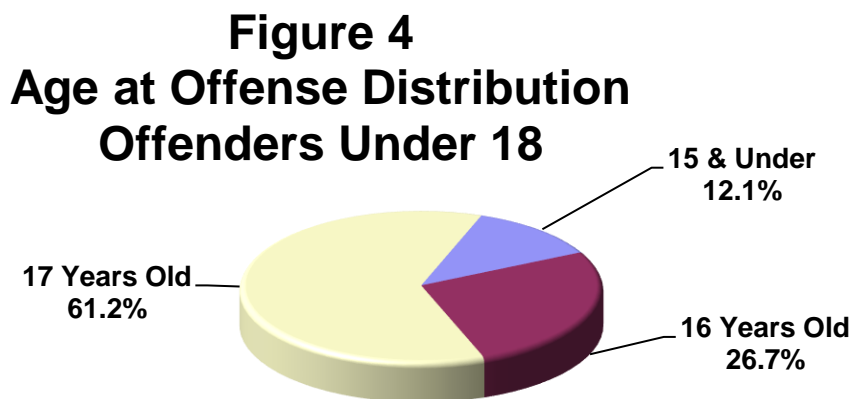
**Table 3  
Age at Sentencing  
Criminal Punishment Code  
Fiscal Year 2017-2018**

Age	Number	Percent
17 and Below	345	0.3%
18 to 24	25,764	20.3%
25 to 29	24,543	19.4%
30 to 34	22,311	17.6%
35 to 39	17,889	14.1%
40 to 44	11,446	9.0%
45 to 49	9,145	7.2%
50 and Over	15,207	12.0%
Unknown	6	
<b>Total</b>	<b>126,656</b>	<b>100.0%</b>



**Table 4  
Age at Offense for Offenders Under 18  
Criminal Punishment Code  
Fiscal Year 2017-2018**

Primary Offense	15 & Under	16 Years Old	17 Years Old	Total
Murder/Manslaughter	26 12.0%	25 5.3%	44 4.0%	<b>95</b> <b>5.3%</b>
Sexual Offenses	19 8.8%	15 3.2%	32 2.9%	<b>66</b> <b>3.7%</b>
Robbery	43 19.9%	89 18.8%	181 16.6%	<b>313</b> <b>17.6%</b>
Violent Personal Offenses	66 30.6%	102 21.5%	183 16.8%	<b>351</b> <b>19.7%</b>
Burglary	45 20.8%	162 34.2%	355 32.6%	<b>562</b> <b>31.6%</b>
Theft, Forgery, Fraud	7 3.2%	29 6.1%	90 8.3%	<b>126</b> <b>7.1%</b>
Drugs	6 2.8%	8 1.7%	67 6.2%	<b>81</b> <b>4.6%</b>
Weapons	3 1.4%	29 6.1%	99 9.1%	<b>131</b> <b>7.4%</b>
Other Offenses	1 0.5%	15 3.2%	37 3.4%	<b>53</b> <b>3.0%</b>
<b>Total</b>	<b>216</b> <b>100.0%</b>	<b>474</b> <b>100.0%</b>	<b>1,088</b> <b>100.0%</b>	<b>1,778</b> <b>100.0%</b>

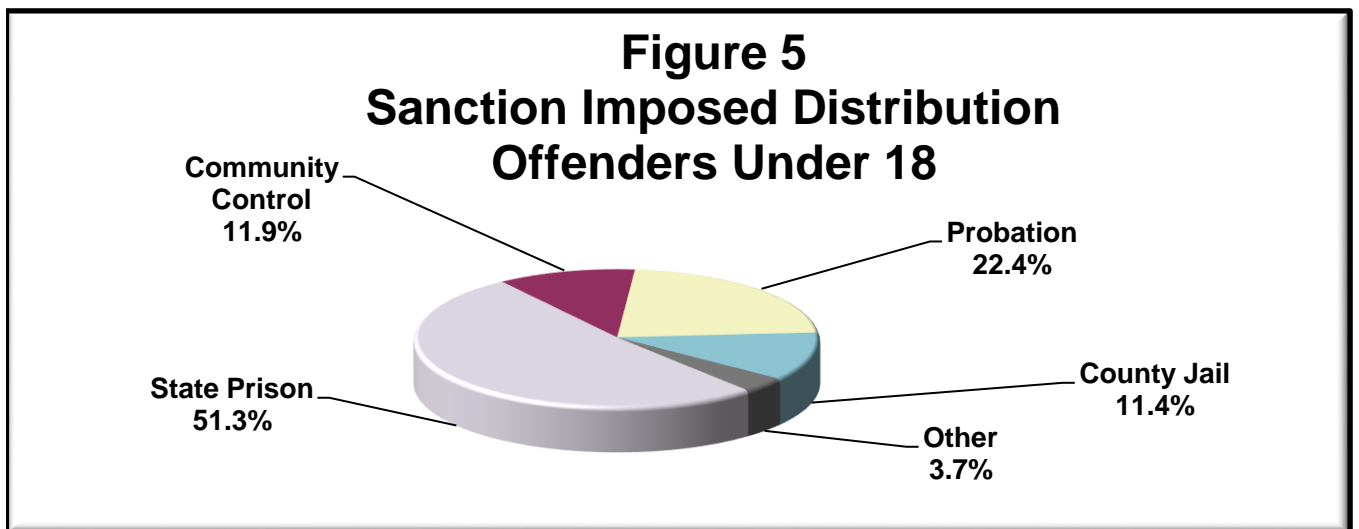




**Table 5**  
**Sanction Imposed by Primary Offense For All 11 - 17 Year Olds**  
**Criminal Punishment Code**  
**Fiscal Year 2017-2018**

Primary Offense	State Prison	Community Control	Probation	County Jail	Other	Total
Murder/Manslaughter	73 8.0%	8 4.0%	10 2.5%	3 1.5%	1 1.5%	<b>95</b> <b>5.3%</b>
Sexual Offenses	38 4.2%	4 2.0%	14 3.5%	7 3.5%	3 4.6%	<b>66</b> <b>3.7%</b>
Robbery	205 22.5%	38 19.0%	41 10.3%	19 9.4%	10 15.4%	<b>313</b> <b>17.6%</b>
Violent Personal Offenses	194 21.3%	39 19.5%	75 18.8%	35 17.3%	8 12.3%	<b>351</b> <b>19.7%</b>
Burglary	290 31.8%	65 32.5%	124 31.1%	56 27.7%	27 41.5%	<b>562</b> <b>31.6%</b>
Theft, Forgery, Fraud	31 3.4%	11 5.5%	50 12.5%	29 14.4%	5 7.7%	<b>126</b> <b>7.1%</b>
Drugs	17 1.9%	7 3.5%	32 8.0%	22 10.9%	3 4.6%	<b>81</b> <b>4.6%</b>
Weapons	49 5.4%	18 9.0%	35 8.8%	23 11.4%	6 9.2%	<b>131</b> <b>7.4%</b>
Other Offenses	15 1.6%	10 5.0%	18 4.5%	8 4.0%	2 3.1%	<b>53</b> <b>3.0%</b>
<b>Total</b>	<b>912</b> <b>100.0%</b>	<b>200</b> <b>100.0%</b>	<b>399</b> <b>100.0%</b>	<b>202</b> <b>100.0%</b>	<b>65</b> <b>100.0%</b>	<b>1,778</b> <b>100.0%</b>

Note: County Jail includes those sentenced to time served; prison includes those sentenced to life.



**Table 6**  
**Gender by Judicial Circuit**  
**Criminal Punishment Code**  
**Fiscal Year 2017-2018**

Judicial Circuit	Gender				Total	
	Male		Female			
01 (Pensacola)	6,441	5.1%	2,250	1.8%	8,691	6.9%
02 (Tallahassee)	2,897	2.3%	785	0.6%	3,682	2.9%
03 (Lake City)	1,960	1.5%	771	0.6%	2,731	2.2%
04 (Jacksonville)	5,028	4.0%	1,533	1.2%	6,561	5.2%
05 (Tavares)	7,242	5.7%	2,399	1.9%	9,641	7.6%
06 (Clearwater)	8,304	6.6%	2,933	2.3%	11,237	8.9%
07 (Daytona Beach)	5,227	4.1%	1,622	1.3%	6,849	5.4%
08 (Gainesville)	2,815	2.2%	887	0.7%	3,702	2.9%
09 (Orlando)	9,542	7.5%	2,228	1.8%	11,770	9.3%
10 (Bartow)	4,809	3.8%	1,645	1.3%	6,454	5.1%
11 (Miami)	5,866	4.6%	991	0.8%	6,857	5.4%
12 (Sarasota)	4,004	3.2%	1,370	1.1%	5,374	4.2%
13 (Tampa)	7,019	5.5%	1,609	1.3%	8,628	6.8%
14 (Panama City)	3,679	2.9%	1,442	1.1%	5,121	4.0%
15 (West Palm Beach)	3,942	3.1%	940	0.7%	4,882	3.9%
16 (Key West)	753	0.6%	112	0.1%	865	0.7%
17 (Ft. Lauderdale)	4,808	3.8%	1,177	0.9%	5,985	4.7%
18 (Sanford)	5,307	4.2%	1,889	1.5%	7,196	5.7%
19 (Ft. Pierce)	3,148	2.5%	1,019	0.8%	4,167	3.3%
20 (Ft. Myers)	4,785	3.8%	1,478	1.2%	6,263	4.9%
<b>Total</b>	<b>97,576</b>	<b>77.0%</b>	<b>29,080</b>	<b>23.0%</b>	<b>126,656</b>	<b>100.0%</b>

**Table 7**  
**Race by Judicial Circuit**  
**Criminal Punishment Code**  
**Fiscal Year 2017-2018**

Judicial Circuit	Race						Total	
	Black		White		Other*			
01 (Pensacola)	2,878	2.3%	5,728	4.5%	85	0.1%	8,691	6.9%
02 (Tallahassee)	2,123	1.7%	1,526	1.2%	33	0.0%	3,682	2.9%
03 (Lake City)	892	0.7%	1,792	1.4%	47	0.0%	2,731	2.2%
04 (Jacksonville)	3,144	2.5%	3,279	2.6%	138	0.1%	6,561	5.2%
05 (Tavares)	2,088	1.6%	7,227	5.7%	326	0.3%	9,641	7.6%
06 (Clearwater)	2,835	2.2%	7,896	6.2%	506	0.4%	11,237	8.9%
07 (Daytona Beach)	1,916	1.5%	4,808	3.8%	125	0.1%	6,849	5.4%
08 (Gainesville)	1,624	1.3%	2,022	1.6%	56	0.0%	3,702	2.9%
09 (Orlando)	4,668	3.7%	7,029	5.5%	73	0.1%	11,770	9.3%
10 (Bartow)	1,827	1.4%	4,556	3.6%	71	0.1%	6,454	5.1%
11 (Miami)	3,395	2.7%	3,439	2.7%	23	0.0%	6,857	5.4%
12 (Sarasota)	1,352	1.1%	3,831	3.0%	191	0.2%	5,374	4.2%
13 (Tampa)	3,568	2.8%	4,886	3.9%	174	0.1%	8,628	6.8%
14 (Panama City)	1,099	0.9%	3,983	3.1%	39	0.0%	5,121	4.0%
15 (W. Palm Beach)	2,467	1.9%	2,409	1.9%	6	0.0%	4,882	3.9%
16 (Key West)	177	0.1%	634	0.5%	54	0.0%	865	0.7%
17 (Ft. Lauderdale)	3,287	2.6%	2,601	2.1%	97	0.1%	5,985	4.7%
18 (Sanford)	2,220	1.8%	4,804	3.8%	172	0.1%	7,196	5.7%
19 (Ft. Pierce)	1,424	1.1%	2,468	1.9%	275	0.2%	4,167	3.3%
20 (Ft. Myers)	1,421	1.1%	4,823	3.8%	19	0.0%	6,263	4.9%
<b>Total</b>	<b>44,405</b>	<b>35.1%</b>	<b>79,741</b>	<b>63.0%</b>	<b>2,510</b>	<b>2.0%</b>	<b>126,656</b>	<b>100.0%</b>

\*Other includes Asian, Native American, and other categories.

## PART II

# OFFENSE TO SENTENCE DATE LAG TIME COMPARISON

## **Offense to Sentence Date Lag Time Comparison**

***FACT:** Scoresheets that have been received by the Department of Corrections for offenders sentenced under the Florida Criminal Punishment Code are not representative of the true impact of sentencing events under the Code.*

### **FINDINGS:**

- There were 85,444 scoresheets submitted to the Department of Corrections with sentence dates in FY 2017-2018 and offense dates on or after October 1, 2016. The number of scoresheets submitted to the Department of Corrections with sentence dates in FY 2016-2017 and offense dates on or after October 1, 2015 was 81,525.
- **Lag Time** - The average length of time that passes from the date an offender commits a crime to the date the offender is sentenced for that crime is 6.4 months for sentencing events in FY 2017-2018 (Table 1).
- More serious and violent crimes typically have much longer lag time than the less serious property or drug crimes. A data file that is constrained by the date of offense must allow for enough time for the serious and violent crimes to be processed and convicted in order to represent a true distribution of sentencing events. The Florida Criminal Punishment Code went into effect for offenses committed on or after October 1, 1998. As of September 1, 2018, the Department of Corrections had received almost 2.7 million Code scoresheets. However, because of the long lag time for serious offenses, the information to date is skewed more heavily by the less serious offenses.
- The average lag time for FY 2016-2017 sentencing events is 6.5 months. When the lag times are examined by offense severity level and type of primary offense, the average lag time for level 10 offenses (most serious) was 10.4 months for sentencing events during FY 2016-2017. In FY 2017-2018, the average lag time for level 10 offenses was 10.9 months. Also, for murder/manslaughter, the average lag time from offense to sentence is 10.7 months for sentencing dates in FY 2016-2017 and 10.9 months for FY 2017-2018 (Table 2).

- The more violent, serious offenses represented 18.1% of the scoresheets in FY 2016-2017 and dropping to 16.9% in FY 2017-2018 (Figure 1).
- Property offenses comprised the largest group of scoresheets received in FY 2016-2017 (34.1%) however Drug offenses in FY 2017-2018 (36.1%) have now surpassed Property offenses (Figure 1).
- Drugs, Possession/Other remains the largest offense category increasing from 24.7% in FY 2016-2017 to 28.6% in FY 2017-2018 (Table 4).

**Table 1**  
**Comparison of Average Time from Offense Date to Sentence Date**  
**by Offense Severity Level of Primary Offense, in Months**

<b>Offense Severity Level</b>	<b>FY2016-2017 Sentence Dates<sup>1</sup></b>	<b>FY2017-2018 Sentence Dates<sup>2</sup></b>
1	5.7	5.6
2	6.4	6.5
3	5.8	5.6
4	6.3	6.5
5	6.9	6.9
6	7.1	7.0
7	7.9	8.0
8	8.8	9.1
9	9.6	9.3
10	10.4	10.9
<b>Overall Average</b>	<b>6.5</b>	<b>6.4</b>

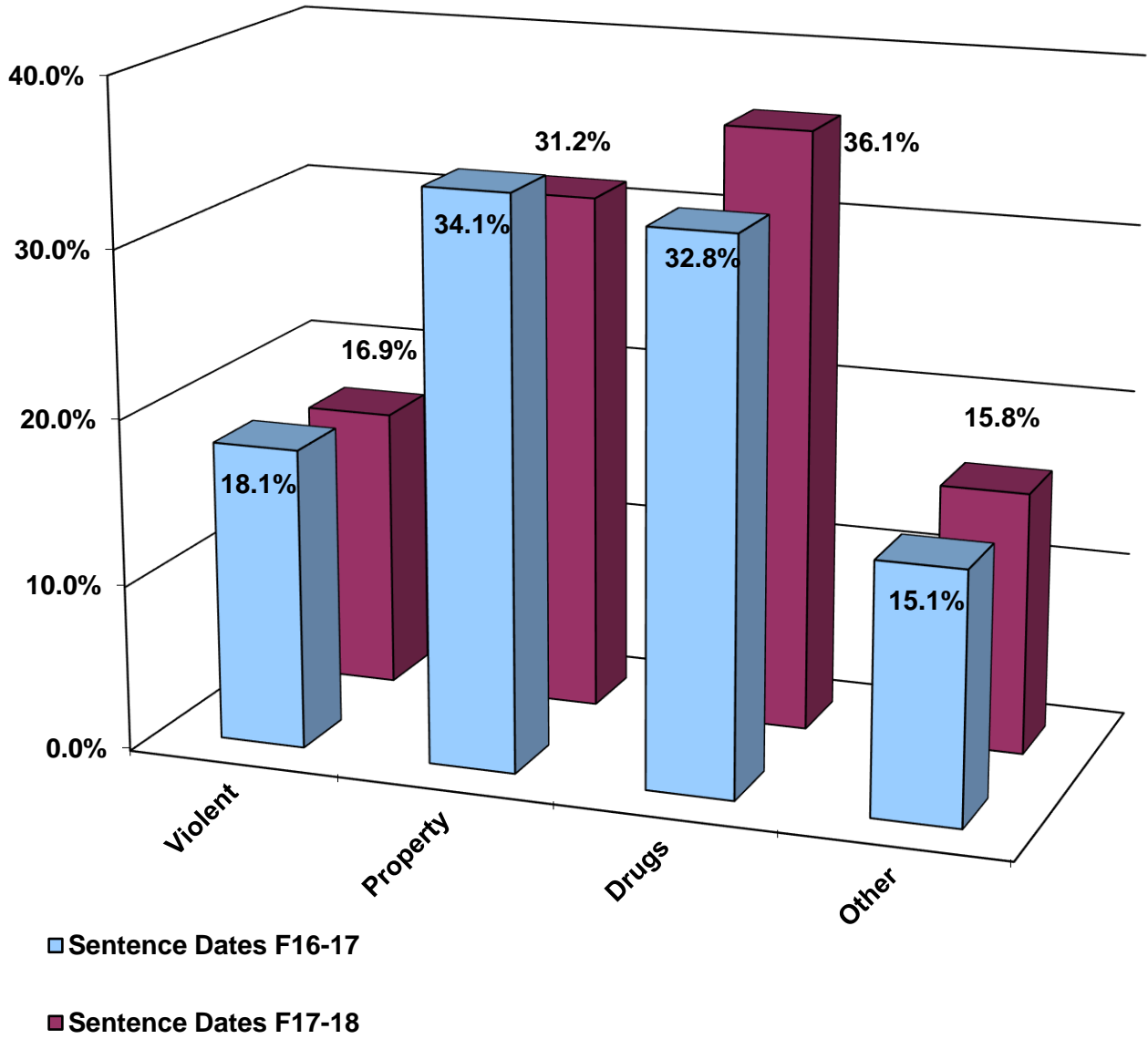
**Table 2**  
**Comparison of Average "Lag" Time from Offense Date to**  
**Sentence Date by Primary Offense, in Months**

<b>Primary Offense</b>	<b>FY2016-2017 Sentence Dates<sup>1</sup></b>	<b>FY2017-2018 Sentence Dates<sup>2</sup></b>
Murder/Manslaughter	10.7	10.9
Sexual/Lewd Behavior	9.3	9.3
Robbery	8.0	8.0
Violent, Other	6.7	6.7
Burglary	6.8	7.1
Property Theft/Fraud/Damage	6.5	6.5
Drugs	6.1	5.8
Weapons	6.7	6.5
Other	6.1	6.0
<b>Overall Average</b>	<b>6.5</b>	<b>6.4</b>

<sup>1</sup> Offense dates on or after October 1, 2015.

<sup>2</sup> Offense dates on or after October 1, 2016.

**Figure 1**  
**Distribution of Offense Group**  
**Sentence Dates in FY2016-2017 vs. FY2017-2018**





**Table 3**  
**Distribution of Offense**  
**Sentence Dates in FY2016-2017 vs. FY2017-2018**

Primary Offense	FY2016-2017 Sentence Dates <sup>1</sup>	FY2017-2018 Sentence Dates <sup>2</sup>
Murder/Manslaughter	231 0.3%	241 0.3%
Sexual Offenses	707 0.9%	679 0.8%
Robbery	1,713 2.1%	1,567 1.8%
Violent Personal Offenses	11,774 14.4%	11,677 13.7%
Burglary	8,111 9.9%	8,150 9.5%
Theft/Forgery/Fraud	19,902 24.4%	18,724 21.9%
Drugs	26,727 32.8%	30,835 36.1%
Weapons	3,417 4.2%	3,848 4.5%
Other	8,943 11.0%	9,723 11.4%
<b>Total</b>	<b>81,525</b> <b>100.0%</b>	<b>85,444</b> <b>100.0%</b>

<sup>1</sup> Offense dates on or after October 1, 2015.

<sup>2</sup> Offense dates on or after October 1, 2016.

**Table 4  
Distribution of Offense**

<b>Primary Offense</b>	<b>FY2016-2017 Sentence Dates<sup>1</sup></b>		<b>FY2017-2018 Sentence Dates<sup>2</sup></b>	
<b>Murder/Manslaughter</b>	<b>231</b>	<b>0.3%</b>	<b>241</b>	<b>0.3%</b>
1st Degree Murder	47	0.1%	54	0.1%
2nd Degree Murder	103	0.1%	110	0.1%
3rd Degree Murder	4	0.0%	3	0.0%
Homicide, Other	2	0.0%	2	0.0%
Manslaughter	40	0.0%	42	0.0%
DUI Manslaughter	35	0.0%	30	0.0%
<b>Sexual Offenses</b>	<b>707</b>	<b>0.9%</b>	<b>679</b>	<b>0.8%</b>
Capital Sexual Battery	20	0.0%	25	0.0%
Life Sexual Battery	31	0.0%	25	0.0%
1st Degree Sexual Battery	66	0.1%	58	0.1%
2nd Degree Sexual Battery	157	0.2%	187	0.2%
Sexual Assault, Other	5	0.0%	4	0.0%
Lewd/Lascivious Behavior	428	0.5%	380	0.4%
<b>Robbery</b>	<b>1,713</b>	<b>2.1%</b>	<b>1,567</b>	<b>1.8%</b>
Robbery with Weapon	661	0.8%	624	0.7%
Robbery without Weapon	997	1.2%	887	1.0%
Home Invasion, Robbery	55	0.1%	56	0.1%
<b>Violent Personal Offenses</b>	<b>11,748</b>	<b>14.4%</b>	<b>11,677</b>	<b>13.7%</b>
Home Invasion, Other	2	0.0%	1	0.0%
Carjacking	108	0.1%	105	0.1%
Aggravated Assault	1,701	2.1%	1,729	2.0%
Aggravated Battery	1,192	1.5%	1,031	1.2%
Assault/Battery on L.E.O.	1,336	1.6%	1,378	1.6%
Assault/Battery, Other	1,369	1.7%	1,470	1.7%
Aggravated Stalking	185	0.2%	180	0.2%
Resisting Arrest with Violence	1,385	1.7%	1,433	1.7%
Kidnapping	369	0.5%	357	0.4%
Arson	140	0.2%	118	0.1%
Abuse of Children	1,117	1.4%	1,118	1.3%
Violent, Other	2,377	2.9%	2,326	2.7%
Leaving Accident, Injury/Death	397	0.5%	373	0.4%
DUI, Injury	70	0.1%	58	0.1%

**Table 4  
Distribution of Offense**

<b>Primary Offense</b>	<b>FY2016-2017 Sentence Dates<sup>1</sup></b>		<b>FY2017-2018 Sentence Dates<sup>2</sup></b>	
<b>Burglary</b>	<b>8,111</b>	<b>9.9%</b>	<b>8,150</b>	<b>9.5%</b>
Burglary, Structure	4,398	5.4%	4,595	5.4%
Burglary, Dwelling	2,581	3.2%	2,402	2.8%
Burglary, Armed	324	0.4%	333	0.4%
Burglary with Assault	214	0.3%	194	0.2%
Burglary/Trespass, Other	594	0.7%	626	0.7%
<b>Theft/Forgery/Fraud</b>	<b>19,943</b>	<b>24.5%</b>	<b>18,724</b>	<b>21.9%</b>
Grand Theft, Other	7,481	9.2%	7,284	8.5%
Grand Theft, Automobile	1,787	2.2%	1,936	2.3%
Stolen Property	3,097	3.8%	2,786	3.3%
Forgery/Counterfeiting	2,154	2.6%	1,967	2.3%
Worthless Checks	90	0.1%	61	0.1%
Fraudulent Practices	2,083	2.6%	1,713	2.0%
Theft/Property Damage, Other	3,251	4.0%	2,977	3.5%
<b>Drugs</b>	<b>26,727</b>	<b>32.8%</b>	<b>30,835</b>	<b>36.1%</b>
Drugs, Manufacture/Sale/Purchase	5,794	7.1%	5,528	6.5%
Drugs, Trafficking	836	1.0%	859	1.0%
Drugs, Possession/Other	20,097	24.7%	24,448	28.6%
<b>Weapons</b>	<b>3,417</b>	<b>4.2%</b>	<b>3,848</b>	<b>4.5%</b>
Weapons, Discharging	237	0.3%	230	0.3%
Weapons, Possession	3,177	3.9%	3,616	4.2%
Weapons, Other	3	0.0%	2	0.0%
<b>Other</b>	<b>8,928</b>	<b>11.0%</b>	<b>9,723</b>	<b>11.4%</b>
Escape	1,925	2.4%	2,133	2.5%
DUI, No Injury	554	0.7%	1	0.0%
Traffic, Other	3,639	4.5%	437	0.5%
Racketeering	29	0.0%	3,691	4.3%
Pollution/Hazardous Materials	15	0.0%	13	0.0%
Criminal Justice System	2,389	2.9%	3,022	3.5%
Other	377	0.5%	426	0.5%
<b>Total</b>	<b>81,525</b>	<b>100.0%</b>	<b>85,444</b>	<b>100.0%</b>

<sup>1</sup> Offense dates on or after October 1, 2015.

<sup>2</sup> Offense dates on or after October 1, 2016.

**PART III**

**COMPARATIVE DESCRIPTION**

## **Comparative Description**

### **NOTES**

This section examines the sentencing parameters point values, as follows:

- The Criminal Punishment Code allows for a non-state prison sanction for offenders scoring 44.0 or fewer total points.
- The Code mandates state prison as the sanction, unless the sentence is mitigated, for all those offenders whose total points exceed 44.0.

This means that only those offenders scoring 44 or fewer points may receive a non-state prison sanction under the Code. All others must receive a state prison sanction, absent downward departure from this structure.

Florida Statute 921.0026 allows for circumstances or factors that reasonably justify the downward departure of Guidelines/Code scoresheet.

In addition, on January 24, 2002 the Supreme Court of Florida ruled in *Jones v. State* that Section 948.01(3) F.S. (supp. 1998), which allows for the sanction of drug offender probation in the case of a chronic substance abuser, provides an alternative sentencing scheme for drug offenders that is outside the Code. It was ruled that the Trial Court had the discretion to sentence the defendant to drug offender probation even though the Code mandated prison time.

Actual sanctions imposed, including state prison, community control, probation, county jail/time served, and other sanctions are presented and compared to the categories listed above.

### **FINDINGS:**

- Across the state, 19.9% of offenders were sentenced to state prison as the most severe sanction in FY 2017-2018. An additional 27.2% were sentenced to incarceration in county jail, or to time already served in jail. Five percent (5%) were sentenced to community control, and almost half to probation (47%), including drug offender probation and regular probation. Less than one percent (0.9%) of offenders were sentenced to “other” sanctions. For sentencing dates

in FY 2016-2017, 20.6% of offenders were sentenced to state prison and 25.9% were sentenced to county jail or time served. Approximately 5.2% were sentenced to community control, and 47.6% to probation. Less than one percent (0.8%) of the offenders were sentenced to “other” sanctions (Table 1).

- Almost three-quarters of the 85,444 Code scoresheets with sentence dates in FY 2017-2018 examined (62,230 scoresheets or 73%) scored 44 points or fewer (Table 1). These scoresheets represent sentencing events where the judge has the discretion to sentence the offender to either a non-state prison sanction or a state prison sanction. If the judge chose to sentence the offender to state prison, the judge had the discretion to sentence the offender up to the statutory maximum of the law. For scoresheets with sentence dates in FY 2016-2017, there were 58,824 (72.2%) offenders scoring 44 points or fewer (Table 1).
- For FY 2017-2018, of the offenders scoring in the recommended state prison category with more than 44 points, 57.1% were sentenced to state prison, with another 13.8% sentenced to county jail or time served. However, of those scoring fewer than 44 points, 6% were sentenced to state prison, and 32.9% to county jail/time served. For FY 2016-2017, 57.2% of the offenders scoring above 44 points were sentenced to state prison and another 13.2% of these offenders were sentenced to county jail or time served. Of those scoring fewer than 44 points, 6.4% were sentenced to state prison, and 30.8% to county jail/time served. (Table 1).
- Overall scoresheets with a state prison sanction decreased from 20.6% in FY 2016-2017 to 19.9% in FY 2017-2018. County jail sanctions increased from 25.9% in FY 2016-2017 to 27.2% in FY 2017-2018. Community Control sanction rates remained roughly the same at 5% for both FY 2016-2017 and FY 2017-2018 (Table 1).
- Statewide, 78% of offenders (13,251 out of 16,994) receiving a prison sanction scored out to a prison sanction in FY 2017-2018. Table 2 presents the scoring distribution of offenders under the Code for FY 2016-2017 and FY 2017-2018 by circuit and sanction imposed. In FY 2017-2018, Circuit 11 (Miami) had the highest percentage (93.9%) of prison sanctioned scoresheets with more than 44 points, followed by Circuit 13 (Tampa) at 91.3%; while Circuit 19 (Ft. Pierce) remains the lowest at 59.4% for another fiscal year.

- Incarceration rates vary greatly by county and circuit. Jail sanctions also vary greatly depending on the number of beds available and judicial inclination to use the jail sanction. Table 3 represents the distribution of sanction imposed by circuit and county. Although variance in sentencing does exist at the circuit and county level based on the judge involved, variability in the statistics presented in this table could also be as a result of differences in the type of offenders being sentenced around the state. There are also very small numbers of scoresheets for some of the counties listed in this table. The incarceration rates for counties with fewer than 100 scoresheets could possibly be misleading (Table 3).
- In both FY 2016-2017 and FY 2017-2018, the majority of violent offenders (those with more serious offenses such as murder/manslaughter and sexual offenses) received a state prison sanction (Table 4).
- Scoresheets with the highest offense severity levels received a state prison sanction, and those with the lowest received probation (Table 5).
- Consistently, in both FY 2016-2017 and FY 2017-2018, for offenders sentenced to state prison, the majority with offense severity levels of 1 through 5 received less than two years (Table 6).
- From FY 2016-2017 to FY 2017-2018, the percentage of scoresheets with no prior record or prior misdemeanors increased slightly. Those with four or more felonies remained the same or increased slightly (Table 7).
- From FY 2016-2017 to FY 2017-2018, the percentage of scoresheets with no additional offenses decreased slightly. The percentage with four or more felonies remained the same or increased slightly (Table 8).
- The true mitigation rate for offenders who scored more than 44 total points is 61.6% for FY 2016-2017 and 62 % for FY 2017-2018. The sanction mitigation rate (cases that scored to state prison but received a non-state prison sanction) was 40.5% for FY 2016-2017 and 40.9% for FY 2017-2018 (Table 11).

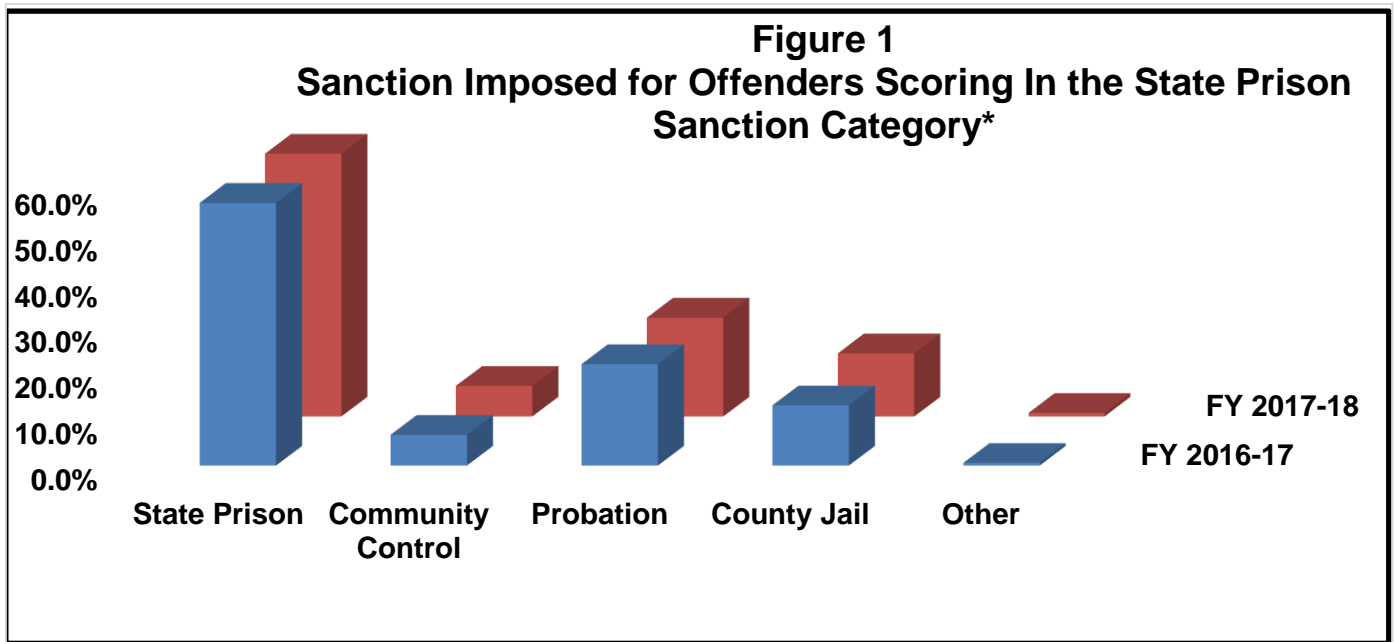
- For the offenders who received a mitigated prison sentence length, the average reduction in sentence was 22.9 months during FY 2016-2017 and 26.1 months during FY 2017-2018 (Table 11).

Departure, as defined here, is not a comment on the legality of the sentence. There are many reasons for departure, which are recognized as legitimate under F. S. 921.0026 Mitigating circumstances. This section applies to any felony offense, except any capital felony, committed on or after October 1, 1998. Database limitations do not allow us to isolate all these reasons for departure.



**Table 1**  
**Recommended Sanction Category by Sanction Imposed**

Sanction Imposed	Recommended Sanction Category							
	FY 2016-2017 Sentence Dates <sup>1</sup>				FY 2017-2018 Sentence Dates <sup>2</sup>			
	22.0 Points or Less	22.1 to 44.0 Points	More than 44.0 Points	Total	22.0 Points or Less	22.1 to 44.0 Points	More than 44.0 Points	Total
State Prison	376 1.5%	3,409 10.2%	12,983 57.2%	<b>16,768</b> <b>20.6%</b>	329 1.2%	3,414 9.6%	13,251 57.1%	<b>16,994</b> <b>19.9%</b>
Community Control	689 2.7%	1,999 6.0%	1,533 6.8%	<b>4,221</b> <b>5.2%</b>	601 2.3%	2,072 5.8%	1,563 6.7%	<b>4,236</b> <b>5.0%</b>
Probation	17,053 67.2%	16,708 49.9%	5,048 22.2%	<b>38,809</b> <b>47.6%</b>	17,815 66.9%	17,367 48.8%	5,006 21.6%	<b>40,188</b> <b>47.0%</b>
County Jail	7,101 28.0%	10,995 32.9%	3,000 13.2%	<b>21,096</b> <b>25.9%</b>	7,746 29.1%	12,300 34.6%	3,206 13.8%	<b>23,252</b> <b>27.2%</b>
Other	153 0.6%	341 1.0%	137 0.6%	<b>631</b> <b>0.8%</b>	153 0.6%	433 1.2%	188 0.8%	<b>774</b> <b>0.9%</b>
<b>Total</b>	<b>25,372</b> <b>100.0%</b>	<b>33,452</b> <b>100.0%</b>	<b>22,701</b> <b>100.0%</b>	<b>81,525</b> <b>100.0%</b>	<b>26,644</b> <b>100.0%</b>	<b>35,586</b> <b>100.0%</b>	<b>23,214</b> <b>100.0%</b>	<b>85,444</b> <b>100.0%</b>



\*Total points greater than 44.

<sup>1</sup> Offense dates on or after October 1, 2015.

<sup>2</sup> Offense dates on or after October 1, 2016.

**Table 2**  
**Recommended Sanction Category by Sanction Imposed**

Judicial Circuit / Sanction Imposed	Recommended Sanction Category											
	FY 2016-2017 Sentence Dates <sup>1</sup>					FY 2017-2018 Sentence Dates <sup>2</sup>						
	22.0 Points or Less		22.1 to 44.0 Points		More than 44.0 Points	22.0 Points or Less		22.1 to 44.0 Points		More than 44.0 Points		
<b>01 (Pensacola)</b>	<b>1,996</b>	<b>36.5%</b>	<b>2,368</b>	<b>43.4%</b>	<b>1,098</b>	<b>20.1%</b>	<b>2,142</b>	<b>35.9%</b>	<b>2,647</b>	<b>44.3%</b>	<b>1,185</b>	<b>19.8%</b>
Prison	30	3.2%	185	19.5%	734	77.3%	36	3.6%	219	21.8%	749	74.6%
Community Control	124	28.0%	234	52.8%	85	19.2%	83	19.6%	252	59.4%	89	21.0%
Probation	1,452	52.5%	1,146	41.4%	169	6.1%	1,585	51.5%	1,271	41.3%	224	7.3%
County Jail	368	30.0%	764	62.2%	96	7.8%	426	30.2%	867	61.5%	116	8.2%
Other	22	29.3%	39	52.0%	14	18.7%	12	21.1%	38	66.7%	7	12.3%
<b>02 (Tallahassee)</b>	<b>567</b>	<b>26.7%</b>	<b>818</b>	<b>38.6%</b>	<b>735</b>	<b>34.7%</b>	<b>605</b>	<b>27.3%</b>	<b>851</b>	<b>38.4%</b>	<b>761</b>	<b>34.3%</b>
Prison	9	2.1%	59	14.0%	352	83.8%	6	1.2%	61	12.6%	417	86.2%
Community Control	11	9.6%	44	38.3%	60	52.2%	4	6.3%	26	40.6%	34	53.1%
Probation	422	37.1%	483	42.5%	231	20.3%	457	38.5%	507	42.7%	222	18.7%
County Jail	123	27.9%	227	51.5%	91	20.6%	135	28.7%	254	53.9%	82	17.4%
Other	2	25.0%	5	62.5%	1	12.5%	3	25.0%	3	25.0%	6	50.0%
<b>03 (Lake City)</b>	<b>399</b>	<b>26.0%</b>	<b>663</b>	<b>43.2%</b>	<b>471</b>	<b>30.7%</b>	<b>467</b>	<b>28.8%</b>	<b>702</b>	<b>43.3%</b>	<b>453</b>	<b>27.9%</b>
Prison	8	2.1%	114	30.4%	253	67.5%	7	1.8%	129	32.5%	261	65.7%
Community Control	30	15.9%	109	57.7%	50	26.5%	28	14.9%	119	63.3%	41	21.8%
Probation	320	39.7%	353	43.8%	133	16.5%	374	44.3%	355	42.1%	115	13.6%
County Jail	37	35.2%	50	47.6%	18	17.1%	45	42.9%	47	44.8%	13	12.4%
Other	4	6.9%	37	63.8%	17	29.3%	13	14.8%	52	59.1%	23	26.1%
<b>04 (Jacksonville)</b>	<b>1,150</b>	<b>26.5%</b>	<b>1,818</b>	<b>41.9%</b>	<b>1,369</b>	<b>31.6%</b>	<b>1,511</b>	<b>30.4%</b>	<b>2,136</b>	<b>43.0%</b>	<b>1,318</b>	<b>26.5%</b>
Prison	37	2.5%	417	28.4%	1,016	69.1%	25	1.9%	409	30.3%	915	67.8%
Community Control	16	22.9%	37	52.9%	17	24.3%	14	15.4%	50	54.9%	27	29.7%
Probation	499	38.7%	617	47.9%	172	13.4%	592	41.5%	681	47.8%	153	10.7%
County Jail	598	39.6%	747	49.5%	164	10.9%	879	42.0%	995	47.5%	220	10.5%
Other	0	0.0%	0	0.0%	0	0.0%	1	20.0%	1	20.0%	3	60.0%
<b>05 (Tavares)</b>	<b>1,735</b>	<b>28.5%</b>	<b>2,603</b>	<b>42.7%</b>	<b>1,756</b>	<b>28.8%</b>	<b>1,761</b>	<b>26.3%</b>	<b>2,826</b>	<b>42.1%</b>	<b>2,120</b>	<b>31.6%</b>
Prison	8	0.5%	332	20.9%	1,252	78.6%	21	1.0%	463	22.8%	1,545	76.1%
Community Control	46	15.7%	172	58.7%	75	25.6%	44	13.0%	185	54.7%	109	32.2%
Probation	1,080	43.9%	1,102	44.8%	279	11.3%	1,211	43.6%	1,222	44.0%	346	12.5%
County Jail	580	34.4%	967	57.3%	140	8.3%	479	32.0%	913	61.0%	104	7.0%
Other	21	34.4%	30	49.2%	10	16.4%	6	9.2%	43	66.2%	16	24.6%
<b>06 (Clearwater)</b>	<b>2,141</b>	<b>30.5%</b>	<b>3,199</b>	<b>45.5%</b>	<b>1,687</b>	<b>24.0%</b>	<b>2,547</b>	<b>32.9%</b>	<b>3,411</b>	<b>44.1%</b>	<b>1,774</b>	<b>22.9%</b>
Prison	18	1.5%	170	13.9%	1,031	84.6%	39	3.0%	166	12.9%	1,084	84.1%
Community Control	19	14.8%	70	54.7%	39	30.5%	24	24.2%	39	39.4%	36	36.4%
Probation	1,065	40.1%	1,241	46.7%	353	13.3%	1,180	43.0%	1,212	44.1%	354	12.9%
County Jail	1,024	34.8%	1,672	56.9%	243	8.3%	1,296	36.5%	1,967	55.4%	289	8.1%
Other	15	18.3%	46	56.1%	21	25.6%	8	17.4%	27	58.7%	11	23.9%
<b>07 (Daytona)</b>	<b>1,788</b>	<b>41.6%</b>	<b>1,580</b>	<b>36.8%</b>	<b>927</b>	<b>21.6%</b>	<b>1,612</b>	<b>34.3%</b>	<b>1,906</b>	<b>40.6%</b>	<b>1,181</b>	<b>25.1%</b>
Prison	100	10.2%	283	28.9%	597	60.9%	52	5.1%	251	24.6%	716	70.3%
Community Control	60	27.1%	103	46.6%	58	26.2%	42	17.5%	118	49.2%	80	33.3%
Probation	1,382	55.5%	907	36.4%	203	8.1%	1,298	48.2%	1,098	40.8%	296	11.0%
County Jail	235	41.9%	266	47.4%	60	10.7%	206	31.9%	384	59.5%	55	8.5%
Other	11	26.8%	21	51.2%	9	22.0%	14	13.6%	55	53.4%	34	33.0%

**Table 2**  
**Recommended Sanction Category by Sanction Imposed**

Judicial Circuit / Sanction Imposed	Recommended Sanction Category											
	FY 2016-2017 Sentence Dates <sup>1</sup>					FY 2017-2018 Sentence Dates <sup>2</sup>						
	22.0 Points or Less		22.1 to 44.0 Points		More than 44.0 Points	22.0 Points or Less		22.1 to 44.0 Points		More than 44.0 Points		
<b>08 (Gainesville)</b>	<b>704</b>	<b>29.8%</b>	<b>944</b>	<b>39.9%</b>	<b>718</b>	<b>30.3%</b>	<b>705</b>	<b>27.7%</b>	<b>1,046</b>	<b>41.2%</b>	<b>790</b>	<b>31.1%</b>
Prison	16	2.1%	219	29.2%	515	68.7%	23	3.0%	221	28.4%	535	68.7%
Community Control	23	25.6%	40	44.4%	27	30.0%	24	22.0%	51	46.8%	34	31.2%
Probation	488	46.3%	442	41.9%	124	11.8%	505	43.1%	533	45.4%	135	11.5%
County Jail	165	39.4%	210	50.1%	44	10.5%	139	33.7%	207	50.2%	66	16.0%
Other	12	22.6%	33	62.3%	8	15.1%	14	20.6%	34	50.0%	20	29.4%
<b>09 (Orlando)</b>	<b>2,566</b>	<b>34.4%</b>	<b>2,933</b>	<b>39.3%</b>	<b>1,961</b>	<b>26.3%</b>	<b>2,851</b>	<b>35.5%</b>	<b>3,174</b>	<b>39.6%</b>	<b>1,998</b>	<b>24.9%</b>
Prison	32	2.3%	214	15.6%	1,130	82.1%	39	2.8%	182	13.2%	1,157	84.0%
Community Control	38	16.8%	93	41.2%	95	42.0%	25	13.5%	92	49.7%	68	36.8%
Probation	1,521	47.5%	1,270	39.7%	412	12.9%	1,569	46.8%	1,366	40.7%	421	12.5%
County Jail	975	36.8%	1,353	51.0%	324	12.2%	1,216	39.3%	1,530	49.5%	348	11.2%
Other	0	0.0%	3	100.0%	0	0.0%	2	20.0%	4	40.0%	4	40.0%
<b>10 (Bartow)</b>	<b>1,232</b>	<b>28.6%</b>	<b>2,023</b>	<b>46.9%</b>	<b>1,055</b>	<b>24.5%</b>	<b>1,303</b>	<b>29.5%</b>	<b>2,090</b>	<b>47.3%</b>	<b>1,021</b>	<b>23.1%</b>
Prison	6	0.6%	226	21.3%	827	78.1%	1	0.1%	236	22.4%	815	77.5%
Community Control	41	14.6%	194	69.0%	46	16.4%	19	7.9%	175	72.6%	47	19.5%
Probation	988	43.1%	1,162	50.7%	141	6.2%	1,082	45.4%	1,178	49.5%	121	5.1%
County Jail	193	29.0%	433	65.1%	39	5.9%	198	27.2%	491	67.5%	38	5.2%
Other	4	28.6%	8	57.1%	2	14.3%	3	23.1%	10	76.9%	0	0.0%
<b>11 (Miami)</b>	<b>1,350</b>	<b>28.0%</b>	<b>1,573</b>	<b>32.6%</b>	<b>1,897</b>	<b>39.4%</b>	<b>1,715</b>	<b>33.2%</b>	<b>1,661</b>	<b>32.2%</b>	<b>1,787</b>	<b>34.6%</b>
Prison	11	2.2%	25	5.0%	463	92.8%	2	0.5%	22	5.6%	368	93.9%
Community Control	17	6.7%	58	22.7%	180	70.6%	9	3.8%	52	22.0%	175	74.2%
Probation	951	39.7%	878	36.7%	565	23.6%	1,249	46.6%	907	33.8%	525	19.6%
County Jail	371	22.2%	612	36.6%	689	41.2%	455	24.5%	680	36.7%	719	38.8%
Other	0	0.0%	0	0.0%	0	0.0%	0	0.0%	0	0.0%	0	0.0%
<b>12 (Sarasota)</b>	<b>1,092</b>	<b>31.3%</b>	<b>1,528</b>	<b>43.8%</b>	<b>872</b>	<b>25.0%</b>	<b>1,056</b>	<b>30.4%</b>	<b>1,611</b>	<b>46.4%</b>	<b>806</b>	<b>23.2%</b>
Prison	10	1.4%	117	16.9%	566	81.7%	5	0.8%	86	14.2%	515	85.0%
Community Control	68	27.8%	117	47.8%	60	24.5%	46	18.1%	156	61.4%	52	20.5%
Probation	725	41.8%	817	47.1%	194	11.2%	723	43.3%	770	46.1%	178	10.7%
County Jail	287	35.3%	475	58.4%	52	6.4%	281	30.2%	593	63.7%	57	6.1%
Other	2	50.0%	2	50.0%	0	0.0%	1	9.1%	6	54.5%	4	36.4%
<b>13 (Tampa)</b>	<b>1,536</b>	<b>25.9%</b>	<b>2,054</b>	<b>34.6%</b>	<b>2,340</b>	<b>39.5%</b>	<b>1,404</b>	<b>23.3%</b>	<b>2,250</b>	<b>37.3%</b>	<b>2,374</b>	<b>39.4%</b>
Prison	3	0.3%	121	11.0%	977	88.7%	8	0.8%	81	7.9%	937	91.3%
Community Control	22	6.2%	73	20.7%	258	73.1%	18	4.3%	75	18.0%	324	77.7%
Probation	994	33.8%	1,243	42.2%	706	24.0%	906	32.7%	1,244	44.8%	624	22.5%
County Jail	506	33.6%	608	40.3%	393	26.1%	463	26.1%	831	46.8%	481	27.1%
Other	11	42.3%	9	34.6%	6	23.1%	9	25.0%	19	52.8%	8	22.2%
<b>14 (Panama City)</b>	<b>695</b>	<b>24.7%</b>	<b>1,325</b>	<b>47.1%</b>	<b>794</b>	<b>28.2%</b>	<b>835</b>	<b>25.6%</b>	<b>1,528</b>	<b>46.8%</b>	<b>902</b>	<b>27.6%</b>
Prison	24	3.1%	246	31.6%	508	65.3%	14	1.9%	206	27.9%	519	70.2%
Community Control	43	12.4%	211	60.8%	93	26.8%	41	11.1%	229	61.7%	101	27.2%
Probation	585	39.0%	761	50.7%	155	10.3%	723	37.6%	971	50.5%	228	11.9%
County Jail	22	31.4%	39	55.7%	9	12.9%	13	18.1%	38	52.8%	21	29.2%
Other	21	17.8%	68	57.6%	29	24.6%	44	27.3%	84	52.2%	33	20.5%

**Table 2**  
**Recommended Sanction Category by Sanction Imposed**

Judicial Circuit / Sanction Imposed	Recommended Sanction Category											
	FY 2016-2017 Sentence Dates <sup>1</sup>					FY 2017-2018 Sentence Dates <sup>2</sup>						
	22.0 Points or Less		22.1 to 44.0 Points		More than 44.0 Points	22.0 Points or Less		22.1 to 44.0 Points		More than 44.0 Points		
<b>15 (West Palm Beach)</b>	<b>896</b>	<b>23.9%</b>	<b>1,534</b>	<b>40.8%</b>	<b>1,326</b>	<b>35.3%</b>	<b>831</b>	<b>23.4%</b>	<b>1,451</b>	<b>40.9%</b>	<b>1,266</b>	<b>35.7%</b>
Prison	3	0.4%	78	10.2%	680	89.4%	4	0.5%	95	12.4%	668	87.1%
Community Control	7	13.0%	25	46.3%	22	40.7%	8	14.3%	22	39.3%	26	46.4%
Probation	417	34.5%	555	46.0%	235	19.5%	364	35.4%	459	44.6%	205	19.9%
County Jail	465	27.3%	861	50.5%	380	22.3%	448	27.0%	851	51.3%	359	21.7%
Other	4	14.3%	15	53.6%	9	32.1%	7	17.9%	24	61.5%	8	20.5%
<b>16 (Key West)</b>	<b>123</b>	<b>26.7%</b>	<b>223</b>	<b>48.5%</b>	<b>114</b>	<b>24.8%</b>	<b>139</b>	<b>32.2%</b>	<b>201</b>	<b>46.5%</b>	<b>92</b>	<b>21.3%</b>
Prison	1	1.5%	19	28.4%	47	70.1%	0	0.0%	15	26.3%	42	73.7%
Community Control	3	8.8%	16	47.1%	15	44.1%	5	22.7%	11	50.0%	6	27.3%
Probation	96	34.4%	144	51.6%	39	14.0%	106	37.2%	141	49.5%	38	13.3%
County Jail	19	28.8%	36	54.5%	11	16.7%	23	46.0%	23	46.0%	4	8.0%
Other	4	0.0%	8	0.0%	2	0.0%	5	27.8%	11	61.1%	2	11.1%
<b>17 (Ft. Lauderdale)</b>	<b>1,222</b>	<b>33.3%</b>	<b>1,345</b>	<b>36.7%</b>	<b>1,100</b>	<b>30.0%</b>	<b>905</b>	<b>32.7%</b>	<b>1,042</b>	<b>37.6%</b>	<b>824</b>	<b>29.7%</b>
Prison	10	2.0%	52	10.3%	443	87.7%	0	0.0%	50	12.6%	348	87.4%
Community Control	13	7.1%	41	22.3%	130	70.7%	9	6.1%	42	28.4%	97	65.5%
Probation	1,095	44.0%	963	38.7%	432	17.3%	834	43.3%	773	40.2%	317	16.5%
County Jail	91	19.6%	285	61.3%	89	19.1%	62	21.0%	174	59.0%	59	20.0%
Other	13	56.5%	4	17.4%	6	26.1%	0	0.0%	3	50.0%	3	50.0%
<b>18 (Sanford)</b>	<b>1,466</b>	<b>33.5%</b>	<b>1,892</b>	<b>43.2%</b>	<b>1,024</b>	<b>23.4%</b>	<b>1,641</b>	<b>33.5%</b>	<b>2,127</b>	<b>43.5%</b>	<b>1,124</b>	<b>23.0%</b>
Prison	9	1.2%	97	13.1%	633	85.7%	12	1.5%	126	15.3%	685	83.2%
Community Control	48	12.7%	184	48.5%	147	38.8%	54	11.7%	237	51.5%	169	36.7%
Probation	1,216	47.6%	1,152	45.1%	188	7.4%	1,381	49.9%	1,198	43.3%	188	6.8%
County Jail	187	27.2%	447	65.1%	53	7.7%	184	22.6%	553	67.9%	78	9.6%
Other	6	28.6%	12	57.1%	3	14.3%	10	37.0%	13	48.1%	4	14.8%
<b>19 (Ft. Pierce)</b>	<b>1,109</b>	<b>40.7%</b>	<b>1,101</b>	<b>40.4%</b>	<b>518</b>	<b>19.0%</b>	<b>1,059</b>	<b>40.1%</b>	<b>1,074</b>	<b>40.6%</b>	<b>511</b>	<b>19.3%</b>
Prison	28	3.9%	277	38.8%	408	57.2%	22	3.5%	230	37.0%	369	59.4%
Community Control	39	32.5%	62	51.7%	19	15.8%	77	49.4%	62	39.7%	17	10.9%
Probation	659	57.3%	432	37.5%	60	5.2%	574	52.1%	436	39.6%	92	8.3%
County Jail	382	51.4%	330	44.4%	31	4.2%	386	50.6%	344	45.1%	33	4.3%
Other	1	100.0%	0	0.0%	0	0.0%	0	0.0%	2	100.0%	0	0.0%
<b>20 (Ft. Myers)</b>	<b>1,603</b>	<b>35.9%</b>	<b>1,927</b>	<b>43.1%</b>	<b>939</b>	<b>21.0%</b>	<b>1,555</b>	<b>35.9%</b>	<b>1,852</b>	<b>42.7%</b>	<b>927</b>	<b>21.4%</b>
Prison	13	1.8%	158	21.9%	551	76.3%	13	1.7%	166	21.1%	606	77.2%
Community Control	21	10.8%	116	59.8%	57	29.4%	27	19.7%	79	57.7%	31	22.6%
Probation	1,098	45.8%	1,040	43.4%	257	10.7%	1,102	46.5%	1,045	44.1%	224	9.4%
County Jail	471	40.7%	612	52.9%	74	6.4%	412	39.8%	558	54.0%	64	6.2%
Other	0	0.0%	1	100.0%	0	0.0%	1	14.3%	4	57.1%	2	28.6%
<b>Statewide</b>	<b>25,370</b>	<b>100.0%</b>	<b>33,451</b>	<b>100.0%</b>	<b>22,701</b>	<b>100.0%</b>	<b>26,644</b>	<b>100.0%</b>	<b>35,586</b>	<b>100.0%</b>	<b>23,214</b>	<b>100.0%</b>

Note: County jail includes those sentenced to time served; prison includes those sentenced to life.

<sup>1</sup> Offense dates on or after October 1, 2015.

<sup>2</sup> Offense dates on or after October 1, 2016.

**Table 3  
Sanction Imposed By Judicial Circuit and County**

Circuit/County	FY2016-2017 Sentence Dates <sup>1</sup>						FY2017-2018 Sentence Dates <sup>2</sup>					
	State Prison	Community Control	Probation	County Jail	Other Sentence	Total	State Prison	Community Control	Probation	County Jail	Other Sentence	Total
<b>01 (Pensacola)</b>	<b>949</b> 17.4%	<b>443</b> 8.1%	<b>2,767</b> 50.7%	<b>1,228</b> 22.5%	<b>75</b> 1.4%	<b>5,462</b> 100.0%	<b>1,004</b> 16.8%	<b>424</b> 7.1%	<b>3,080</b> 51.6%	<b>1,409</b> 23.6%	<b>57</b> 1.0%	<b>5,974</b> 100.0%
Escambia	501 19.1%	224 8.6%	1,173 44.8%	681 26.0%	38 1.5%	<b>2,617</b> 100.0%	536 18.1%	196 6.6%	1,424 48.1%	781 26.4%	26 0.9%	<b>2,963</b> 100.0%
Okaloosa	263 18.1%	125 8.6%	800 55.0%	240 16.5%	27 1.9%	<b>1,455</b> 100.0%	234 15.4%	151 9.9%	926 60.8%	193 12.7%	20 1.3%	<b>1,524</b> 100.0%
Santa Rosa	124 12.5%	66 6.6%	545 54.9%	248 25.0%	10 1.0%	<b>993</b> 100.0%	135 12.0%	61 5.4%	563 49.9%	358 31.7%	11 1.0%	<b>1,128</b> 100.0%
Walton	61 15.4%	28 7.1%	249 62.7%	59 14.9%	0 0.0%	<b>397</b> 100.0%	99 27.6%	16 4.5%	167 46.5%	77 21.4%	0 0.0%	<b>359</b> 100.0%
<b>02 (Tallahassee)</b>	<b>420</b> 19.8%	<b>115</b> 5.4%	<b>1,136</b> 53.6%	<b>441</b> 20.8%	<b>8</b> 0.4%	<b>2,120</b> 100.0%	<b>484</b> 21.8%	<b>64</b> 2.9%	<b>1,186</b> 53.5%	<b>471</b> 21.2%	<b>12</b> 0.5%	<b>2,217</b> 100.0%
Franklin	18 19.1%	14 14.9%	50 53.2%	11 11.7%	1 1.1%	<b>94</b> 100.0%	18 15.5%	6 5.2%	63 54.3%	28 24.1%	1 0.9%	<b>116</b> 100.0%
Gadsden	29 23.6%	2 1.6%	85 69.1%	7 5.7%	0 0.0%	<b>123</b> 100.0%	15 15.6%	5 5.2%	66 68.8%	10 10.4%	0 0.0%	<b>96</b> 100.0%
Jefferson	4 9.1%	3 6.8%	30 68.2%	6 13.6%	1 2.3%	<b>44</b> 100.0%	14 36.8%	1 2.6%	23 60.5%	0 0.0%	0 0.0%	<b>38</b> 100.0%
Leon	346 20.3%	93 5.4%	862 50.5%	402 23.5%	5 0.3%	<b>1,708</b> 100.0%	407 22.3%	50 2.7%	938 51.3%	423 23.1%	11 0.6%	<b>1,829</b> 100.0%
Liberty	10 22.7%	3 6.8%	27 61.4%	4 9.1%	0 0.0%	<b>44</b> 100.0%	6 23.1%	0 0.0%	19 73.1%	1 3.8%	0 0.0%	<b>26</b> 100.0%
Wakulla	13 12.1%	0 0.0%	82 76.6%	11 10.3%	1 0.9%	<b>107</b> 100.0%	24 21.4%	2 1.8%	77 68.8%	9 8.0%	0 0.0%	<b>112</b> 100.0%

**Table 3**  
**Sanction Imposed By Judicial Circuit and County**

Circuit/County	FY2016-2017 Sentence Dates <sup>1</sup>						FY2017-2018 Sentence Dates <sup>2</sup>					
	State Prison	Community Control	Probation	County Jail	Other Sentence	Total	State Prison	Community Control	Probation	County Jail	Other Sentence	Total
<b>03 (Lake City)</b>	<b>375</b>	<b>189</b>	<b>806</b>	<b>105</b>	<b>58</b>	<b>1,533</b>	<b>397</b>	<b>188</b>	<b>844</b>	<b>105</b>	<b>88</b>	<b>1,622</b>
	<b>24.5%</b>	<b>12.3%</b>	<b>52.6%</b>	<b>6.8%</b>	<b>3.8%</b>	<b>100.0%</b>	<b>24.5%</b>	<b>11.6%</b>	<b>52.0%</b>	<b>6.5%</b>	<b>5.4%</b>	<b>100.0%</b>
Columbia	178	49	297	52	22	<b>598</b>	186	44	291	47	20	<b>588</b>
	29.8%	8.2%	49.7%	8.7%	3.7%	<b>100.0%</b>	31.6%	7.5%	49.5%	8.0%	3.4%	<b>100.0%</b>
Dixie	21	36	66	9	7	<b>139</b>	32	29	62	9	9	<b>141</b>
	15.1%	25.9%	47.5%	6.5%	5.0%	<b>100.0%</b>	22.7%	20.6%	44.0%	6.4%	6.4%	<b>100.0%</b>
Hamilton	21	4	48	15	0	<b>88</b>	9	15	66	12	8	<b>110</b>
	23.9%	4.5%	54.5%	17.0%	0.0%	<b>100.0%</b>	8.2%	13.6%	60.0%	10.9%	7.3%	<b>100.0%</b>
Lafayette	8	5	18	1	0	<b>32</b>	4	8	43	1	2	<b>58</b>
	25.0%	15.6%	56.3%	3.1%	0.0%	<b>100.0%</b>	6.9%	13.8%	74.1%	1.7%	3.4%	<b>100.0%</b>
Madison	21	9	131	2	15	<b>178</b>	16	9	143	7	10	<b>185</b>
	11.8%	5.1%	73.6%	1.1%	8.4%	<b>100.0%</b>	8.6%	4.9%	77.3%	3.8%	5.4%	<b>100.0%</b>
Suwannee	71	41	133	20	6	<b>271</b>	106	55	139	23	11	<b>334</b>
	26.2%	15.1%	49.1%	7.4%	2.2%	<b>100.0%</b>	31.7%	16.5%	41.6%	6.9%	3.3%	<b>100.0%</b>
Taylor	55	45	113	6	8	<b>227</b>	44	28	100	6	28	<b>206</b>
	24.2%	19.8%	49.8%	2.6%	3.5%	<b>100.0%</b>	21.4%	13.6%	48.5%	2.9%	13.6%	<b>100.0%</b>
<b>04 (Jacksonville)</b>	<b>1,470</b>	<b>70</b>	<b>1,288</b>	<b>1,509</b>	<b>0</b>	<b>4,337</b>	<b>1,349</b>	<b>91</b>	<b>1,426</b>	<b>2,094</b>	<b>5</b>	<b>4,965</b>
	<b>33.9%</b>	<b>1.6%</b>	<b>29.7%</b>	<b>34.8%</b>	<b>0.0%</b>	<b>100.0%</b>	<b>27.2%</b>	<b>1.8%</b>	<b>28.7%</b>	<b>42.2%</b>	<b>0.1%</b>	<b>100.0%</b>
Clay	192	12	286	172	0	<b>662</b>	204	22	250	220	1	<b>697</b>
	29.0%	1.8%	43.2%	26.0%	0.0%	<b>100.0%</b>	29.3%	3.2%	35.9%	31.6%	0.1%	<b>100.0%</b>
Duval	1,207	50	817	1,217	0	<b>3,291</b>	1,055	62	997	1,688	3	<b>3,805</b>
	36.7%	1.5%	24.8%	37.0%	0.0%	<b>100.0%</b>	27.7%	1.6%	26.2%	44.4%	0.1%	<b>100.0%</b>
Nassau	71	8	185	120	0	<b>384</b>	90	7	179	186	1	<b>463</b>
	18.5%	2.1%	48.2%	31.3%	0.0%	<b>100.0%</b>	19.4%	1.5%	38.7%	40.2%	0.2%	<b>100.0%</b>

**Table 3  
Sanction Imposed By Judicial Circuit and County**

Circuit/County	FY2016-2017 Sentence Dates <sup>1</sup>						FY2017-2018 Sentence Dates <sup>2</sup>					
	State Prison	Community Control	Probation	County Jail	Other Sentence	Total	State Prison	Community Control	Probation	County Jail	Other Sentence	Total
<b>05 (Tavares)</b>	<b>1,592</b> <b>26.1%</b>	<b>293</b> <b>4.8%</b>	<b>2,461</b> <b>40.4%</b>	<b>1,687</b> <b>27.7%</b>	<b>61</b> <b>1.0%</b>	<b>6,094</b> <b>100.0%</b>	<b>2,029</b> <b>30.3%</b>	<b>338</b> <b>5.0%</b>	<b>2,779</b> <b>41.4%</b>	<b>1,496</b> <b>22.3%</b>	<b>65</b> <b>1.0%</b>	<b>6,707</b> <b>100.0%</b>
Citrus	309 35.8%	82 9.5%	315 36.5%	152 17.6%	5 0.6%	<b>863</b> <b>100.0%</b>	373 38.2%	76 7.8%	355 36.3%	166 17.0%	7 0.7%	<b>977</b> <b>100.0%</b>
Hernando	484 35.5%	88 6.5%	487 35.7%	288 21.1%	17 1.2%	<b>1,364</b> <b>100.0%</b>	688 40.9%	124 7.4%	522 31.1%	316 18.8%	31 1.8%	<b>1,681</b> <b>100.0%</b>
Lake	247 14.2%	65 3.7%	734 42.2%	665 38.2%	28 1.6%	<b>1,739</b> <b>100.0%</b>	214 14.8%	64 4.4%	810 56.1%	349 24.2%	8 0.6%	<b>1,445</b> <b>100.0%</b>
Marion	469 27.7%	38 2.2%	733 43.3%	442 26.1%	10 0.6%	<b>1,692</b> <b>100.0%</b>	576 29.0%	42 2.1%	849 42.7%	503 25.3%	19 1.0%	<b>1,989</b> <b>100.0%</b>
Sumter	83 19.0%	20 4.6%	192 44.0%	140 32.1%	1 0.2%	<b>436</b> <b>100.0%</b>	178 28.9%	32 5.2%	243 39.5%	162 26.3%	0 0.0%	<b>615</b> <b>100.0%</b>
<b>06 (Clearwater)</b>	<b>1,219</b> <b>17.3%</b>	<b>128</b> <b>1.8%</b>	<b>2,659</b> <b>37.8%</b>	<b>2,939</b> <b>41.8%</b>	<b>82</b> <b>1.2%</b>	<b>7,027</b> <b>100.0%</b>	<b>1,289</b> <b>16.7%</b>	<b>99</b> <b>1.3%</b>	<b>2,746</b> <b>35.5%</b>	<b>3,552</b> <b>45.9%</b>	<b>46</b> <b>0.6%</b>	<b>7,732</b> <b>100.0%</b>
Pasco	346 17.1%	40 2.0%	979 48.3%	650 32.1%	10 0.5%	<b>2,025</b> <b>100.0%</b>	340 14.9%	46 2.0%	989 43.3%	893 39.1%	14 0.6%	<b>2,282</b> <b>100.0%</b>
Pinellas	873 17.5%	88 1.8%	1,680 33.6%	2,289 45.8%	72 1.4%	<b>5,002</b> <b>100.0%</b>	949 17.4%	53 1.0%	1,757 32.2%	2,659 48.8%	32 0.6%	<b>5,450</b> <b>100.0%</b>
<b>07 (Daytona)</b>	<b>980</b> <b>22.8%</b>	<b>221</b> <b>5.1%</b>	<b>2,492</b> <b>58.0%</b>	<b>561</b> <b>13.1%</b>	<b>41</b> <b>1.0%</b>	<b>4,295</b> <b>100.0%</b>	<b>1,019</b> <b>21.7%</b>	<b>240</b> <b>5.1%</b>	<b>2,692</b> <b>57.3%</b>	<b>645</b> <b>13.7%</b>	<b>103</b> <b>2.2%</b>	<b>4,699</b> <b>100.0%</b>
Flagler	51 17.6%	7 2.4%	177 61.0%	49 16.9%	6 2.1%	<b>290</b> <b>100.0%</b>	77 20.3%	18 4.7%	237 62.4%	47 12.4%	1 0.3%	<b>380</b> <b>100.0%</b>
Putnam	163 28.8%	25 4.4%	233 41.2%	131 23.2%	13 2.3%	<b>565</b> <b>100.0%</b>	123 22.6%	22 4.0%	249 45.8%	134 24.6%	16 2.9%	<b>544</b> <b>100.0%</b>
St. Johns	173 22.7%	27 3.5%	406 53.2%	157 20.6%	0 0.0%	<b>763</b> <b>100.0%</b>	248 26.7%	18 1.9%	454 48.9%	209 22.5%	0 0.0%	<b>929</b> <b>100.0%</b>
Volusia	593 22.2%	162 6.1%	1,676 62.6%	224 8.4%	22 0.8%	<b>2,677</b> <b>100.0%</b>	571 20.1%	182 6.4%	1,752 61.6%	255 9.0%	86 3.0%	<b>2,846</b> <b>100.0%</b>

**Table 3  
Sanction Imposed By Judicial Circuit and County**

Circuit/County	FY2016-2017 Sentence Dates <sup>1</sup>						FY2017-2018 Sentence Dates <sup>2</sup>					
	State Prison	Community Control	Probation	County Jail	Other Sentence	Total	State Prison	Community Control	Probation	County Jail	Other Sentence	Total
<b>08 (Gainesville)</b>	<b>750</b> <b>31.7%</b>	<b>90</b> <b>3.8%</b>	<b>1,054</b> <b>44.5%</b>	<b>419</b> <b>17.7%</b>	<b>53</b> <b>2.2%</b>	<b>2,366</b> <b>100.0%</b>	<b>779</b> <b>30.7%</b>	<b>109</b> <b>4.3%</b>	<b>1,173</b> <b>46.2%</b>	<b>412</b> <b>16.2%</b>	<b>68</b> <b>2.7%</b>	<b>2,541</b> <b>100.0%</b>
Alachua	497 33.8%	54 3.7%	595 40.5%	282 19.2%	42 2.9%	<b>1,470</b> <b>100.0%</b>	453 30.3%	58 3.9%	676 45.2%	264 17.7%	44 2.9%	<b>1,495</b> <b>100.0%</b>
Baker	93 43.7%	17 8.0%	91 42.7%	10 4.7%	2 0.9%	<b>213</b> <b>100.0%</b>	120 41.4%	22 7.6%	132 45.5%	15 5.2%	1 0.3%	<b>290</b> <b>100.0%</b>
Bradford	48 18.4%	4 1.5%	155 59.4%	51 19.5%	3 1.1%	<b>261</b> <b>100.0%</b>	64 23.1%	5 1.8%	139 50.2%	60 21.7%	9 3.2%	<b>277</b> <b>100.0%</b>
Gilchrist	31 29.0%	2 1.9%	64 59.8%	9 8.4%	1 0.9%	<b>107</b> <b>100.0%</b>	48 37.8%	4 3.1%	60 47.2%	13 10.2%	2 1.6%	<b>127</b> <b>100.0%</b>
Levy	60 23.7%	10 4.0%	117 46.2%	62 24.5%	4 1.6%	<b>253</b> <b>100.0%</b>	57 20.7%	14 5.1%	133 48.4%	59 21.5%	12 4.4%	<b>275</b> <b>100.0%</b>
Union	21 33.9%	3 4.8%	32 51.6%	5 8.1%	1 1.6%	<b>62</b> <b>100.0%</b>	37 48.1%	6 7.8%	33 42.9%	1 1.3%	0 0.0%	<b>77</b> <b>100.0%</b>
<b>09 (Orlando)</b>	<b>1,376</b> <b>18.4%</b>	<b>226</b> <b>3.0%</b>	<b>3,203</b> <b>42.9%</b>	<b>2,652</b> <b>35.5%</b>	<b>3</b> <b>0.0%</b>	<b>7,460</b> <b>100.0%</b>	<b>1,378</b> <b>17.2%</b>	<b>185</b> <b>2.3%</b>	<b>3,356</b> <b>41.8%</b>	<b>3,094</b> <b>38.6%</b>	<b>10</b> <b>0.1%</b>	<b>8,023</b> <b>100.0%</b>
Orange	965 17.2%	144 2.6%	2,370 42.2%	2,139 38.1%	3 0.1%	<b>5,621</b> <b>100.0%</b>	1,005 15.9%	90 1.4%	2,524 39.9%	2,689 42.6%	10 0.2%	<b>6,318</b> <b>100.0%</b>
Osceola	411 22.3%	82 4.5%	833 45.3%	513 27.9%	0 0.0%	<b>1,839</b> <b>100.0%</b>	373 21.9%	95 5.6%	832 48.8%	405 23.8%	0 0.0%	<b>1,705</b> <b>100.0%</b>
<b>10 (Bartow)</b>	<b>1,059</b> <b>24.6%</b>	<b>281</b> <b>6.5%</b>	<b>2,291</b> <b>53.2%</b>	<b>665</b> <b>15.4%</b>	<b>14</b> <b>0.3%</b>	<b>4,310</b> <b>100.0%</b>	<b>1,052</b> <b>23.8%</b>	<b>241</b> <b>5.5%</b>	<b>2,381</b> <b>53.9%</b>	<b>727</b> <b>16.5%</b>	<b>13</b> <b>0.3%</b>	<b>4,414</b> <b>100.0%</b>
Hardee	40 23.1%	8 4.6%	107 61.8%	17 9.8%	1 0.6%	<b>173</b> <b>100.0%</b>	28 23.3%	13 10.8%	57 47.5%	22 18.3%	0 0.0%	<b>120</b> <b>100.0%</b>
Highlands	89 18.0%	48 9.7%	241 48.8%	107 21.7%	9 1.8%	<b>494</b> <b>100.0%</b>	88 18.8%	33 7.1%	263 56.2%	80 17.1%	4 0.9%	<b>468</b> <b>100.0%</b>
Polk	930 25.5%	225 6.2%	1,943 53.3%	541 14.9%	4 0.1%	<b>3,643</b> <b>100.0%</b>	936 24.5%	195 5.1%	2,061 53.9%	625 16.3%	9 0.2%	<b>3,826</b> <b>100.0%</b>



**Table 3  
Sanction Imposed By Judicial Circuit and County**

Circuit/County	FY2016-2017 Sentence Dates <sup>1</sup>						FY2017-2018 Sentence Dates <sup>2</sup>					
	State Prison	Community Control	Probation	County Jail	Other Sentence	Total	State Prison	Community Control	Probation	County Jail	Other Sentence	Total
<b>11 (Miami)</b>	<b>499</b>	<b>255</b>	<b>2,394</b>	<b>1,672</b>	<b>0</b>	<b>4,820</b>	<b>392</b>	<b>236</b>	<b>2,681</b>	<b>1,854</b>	<b>0</b>	<b>5,163</b>
	<b>10.4%</b>	<b>5.3%</b>	<b>49.7%</b>	<b>34.7%</b>	<b>0.0%</b>	<b>100.0%</b>	<b>7.6%</b>	<b>4.6%</b>	<b>51.9%</b>	<b>35.9%</b>	<b>0.0%</b>	<b>100.0%</b>
Miami-Dade	499	255	2,394	1,672	0	4,820	392	236	2,681	1,854	0	5,163
	10.4%	5.3%	49.7%	34.7%	0.0%	100.0%	7.6%	4.6%	51.9%	35.9%	0.0%	100.0%
<b>12 (Sarasota)</b>	<b>693</b>	<b>245</b>	<b>1,736</b>	<b>814</b>	<b>4</b>	<b>3,492</b>	<b>606</b>	<b>254</b>	<b>1,671</b>	<b>931</b>	<b>11</b>	<b>3,473</b>
	<b>19.8%</b>	<b>7.0%</b>	<b>49.7%</b>	<b>23.3%</b>	<b>0.1%</b>	<b>100.0%</b>	<b>17.4%</b>	<b>7.3%</b>	<b>48.1%</b>	<b>26.8%</b>	<b>0.3%</b>	<b>100.0%</b>
Desoto	76	35	140	46	1	298	77	25	120	49	0	271
	25.5%	11.7%	47.0%	15.4%	0.3%	100.0%	28.4%	9.2%	44.3%	18.1%	0.0%	100.0%
Manatee	293	87	749	343	2	1,474	242	89	709	320	6	1,366
	19.9%	5.9%	50.8%	23.3%	0.1%	100.0%	17.7%	6.5%	51.9%	23.4%	0.4%	100.0%
Sarasota	324	123	847	425	1	1,720	287	140	842	562	5	1,836
	18.8%	7.2%	49.2%	24.7%	0.1%	100.0%	15.6%	7.6%	45.9%	30.6%	0.3%	100.0%
<b>13 (Tampa)</b>	<b>1,101</b>	<b>353</b>	<b>2,943</b>	<b>1,507</b>	<b>26</b>	<b>5,930</b>	<b>1,026</b>	<b>417</b>	<b>2,774</b>	<b>1,775</b>	<b>36</b>	<b>6,028</b>
	<b>18.6%</b>	<b>6.0%</b>	<b>49.6%</b>	<b>25.4%</b>	<b>0.4%</b>	<b>100.0%</b>	<b>17.0%</b>	<b>6.9%</b>	<b>46.0%</b>	<b>29.4%</b>	<b>0.6%</b>	<b>100.0%</b>
Hillsborough	1,101	353	2,943	1,507	26	5,930	1,026	417	2,774	1,775	36	6,028
	18.6%	6.0%	49.6%	25.4%	0.4%	100.0%	17.0%	6.9%	46.0%	29.4%	0.6%	100.0%
<b>14 (Panama City)</b>	<b>778</b>	<b>347</b>	<b>1,501</b>	<b>70</b>	<b>118</b>	<b>2,814</b>	<b>739</b>	<b>371</b>	<b>1,922</b>	<b>72</b>	<b>161</b>	<b>3,265</b>
	<b>27.6%</b>	<b>12.3%</b>	<b>53.3%</b>	<b>2.5%</b>	<b>4.2%</b>	<b>100.0%</b>	<b>22.6%</b>	<b>11.4%</b>	<b>58.9%</b>	<b>2.2%</b>	<b>4.9%</b>	<b>100.0%</b>
Bay	476	218	957	40	76	1,767	434	217	1,256	15	91	2,013
	26.9%	12.3%	54.2%	2.3%	4.3%	100.0%	21.6%	10.8%	62.4%	0.7%	4.5%	100.0%
Calhoun	19	16	76	0	7	118	33	11	75	1	11	131
	16.1%	13.6%	64.4%	0.0%	5.9%	100.0%	25.2%	8.4%	57.3%	0.8%	8.4%	100.0%
Gulf	36	19	70	8	21	154	28	15	71	3	5	122
	23.4%	12.3%	45.5%	5.2%	13.6%	100.0%	23.0%	12.3%	58.2%	2.5%	4.1%	100.0%
Holmes	44	55	129	5	4	237	77	56	155	16	12	316
	18.6%	23.2%	54.4%	2.1%	1.7%	100.0%	24.4%	17.7%	49.1%	5.1%	3.8%	100.0%
Jackson	164	15	151	11	7	348	110	42	189	29	9	379
	47.1%	4.3%	43.4%	3.2%	2.0%	100.0%	29.0%	11.1%	49.9%	7.7%	2.4%	100.0%
Washington	39	24	118	6	3	190	57	30	176	8	33	304
	20.5%	12.6%	62.1%	3.2%	1.6%	100.0%	18.8%	9.9%	57.9%	2.6%	10.9%	100.0%

**Table 3  
Sanction Imposed By Judicial Circuit and County**

Circuit/County	FY2016-2017 Sentence Dates <sup>1</sup>						FY2017-2018 Sentence Dates <sup>2</sup>					
	State Prison	Community Control	Probation	County Jail	Other Sentence	Total	State Prison	Community Control	Probation	County Jail	Other Sentence	Total
<b>15 (West Palm Beach)</b>	<b>761</b>	<b>54</b>	<b>1,207</b>	<b>1,706</b>	<b>28</b>	<b>3,756</b>	<b>767</b>	<b>56</b>	<b>1,028</b>	<b>1,658</b>	<b>39</b>	<b>3,548</b>
	<b>20.3%</b>	<b>1.4%</b>	<b>32.1%</b>	<b>45.4%</b>	<b>0.7%</b>	<b>100.0%</b>	<b>21.6%</b>	<b>1.6%</b>	<b>29.0%</b>	<b>46.7%</b>	<b>1.1%</b>	<b>100.0%</b>
Palm Beach	761	54	1,207	1,706	28	3,756	767	56	1,028	1,658	39	3,548
	20.3%	1.4%	32.1%	45.4%	0.7%	100.0%	21.6%	1.6%	29.0%	46.7%	1.1%	100.0%
<b>16 (Key West)</b>	<b>67</b>	<b>34</b>	<b>279</b>	<b>66</b>	<b>14</b>	<b>460</b>	<b>57</b>	<b>22</b>	<b>285</b>	<b>50</b>	<b>18</b>	<b>432</b>
	<b>14.6%</b>	<b>7.4%</b>	<b>60.7%</b>	<b>14.3%</b>	<b>3.0%</b>	<b>100.0%</b>	<b>13.2%</b>	<b>5.1%</b>	<b>66.0%</b>	<b>11.6%</b>	<b>4.2%</b>	<b>100.0%</b>
Monroe	67	34	279	66	14	460	57	22	285	50	18	432
	14.6%	7.4%	60.7%	14.3%	3.0%	100.0%	13.2%	5.1%	66.0%	11.6%	4.2%	100.0%
<b>17 (Ft. Lauderdale)</b>	<b>505</b>	<b>184</b>	<b>2,490</b>	<b>465</b>	<b>23</b>	<b>3,667</b>	<b>398</b>	<b>148</b>	<b>1,924</b>	<b>295</b>	<b>6</b>	<b>2,771</b>
	<b>13.8%</b>	<b>5.0%</b>	<b>67.9%</b>	<b>12.7%</b>	<b>0.6%</b>	<b>100.0%</b>	<b>14.4%</b>	<b>5.3%</b>	<b>69.4%</b>	<b>10.6%</b>	<b>0.2%</b>	<b>100.0%</b>
Broward	505	184	2,490	465	23	3,667	398	148	1,924	295	6	2,771
	13.8%	5.0%	67.9%	12.7%	0.6%	100.0%	14.4%	5.3%	69.4%	10.6%	0.2%	100.0%
<b>18 (Sanford)</b>	<b>739</b>	<b>379</b>	<b>2,556</b>	<b>687</b>	<b>21</b>	<b>4,382</b>	<b>823</b>	<b>460</b>	<b>2,767</b>	<b>815</b>	<b>27</b>	<b>4,892</b>
	<b>16.9%</b>	<b>8.6%</b>	<b>58.3%</b>	<b>15.7%</b>	<b>0.5%</b>	<b>100.0%</b>	<b>16.8%</b>	<b>9.4%</b>	<b>56.6%</b>	<b>16.7%</b>	<b>0.6%</b>	<b>100.0%</b>
Brevard	506	267	1,520	554	11	2,858	526	299	1,626	649	21	3,121
	17.7%	9.3%	53.2%	19.4%	0.4%	100.0%	16.9%	9.6%	52.1%	20.8%	0.7%	100.0%
Seminole	233	112	1,036	133	10	1,524	297	161	1,141	166	6	1,771
	15.3%	7.3%	68.0%	8.7%	0.7%	100.0%	16.8%	9.1%	64.4%	9.4%	0.3%	100.0%

**Table 3  
Sanction Imposed By Judicial Circuit and County**

Circuit/County	FY2016-2017 Sentence Dates <sup>1</sup>						FY2017-2018 Sentence Dates <sup>2</sup>					
	State Prison	Community Control	Probation	County Jail	Other Sentence	Total	State Prison	Community Control	Probation	County Jail	Other Sentence	Total
<b>19 (Ft. Pierce)</b>	<b>713</b> <b>26.1%</b>	<b>120</b> <b>4.4%</b>	<b>1,151</b> <b>42.2%</b>	<b>743</b> <b>27.2%</b>	<b>1</b> <b>0.0%</b>	<b>2,728</b> <b>100.0%</b>	<b>621</b> <b>23.5%</b>	<b>156</b> <b>5.9%</b>	<b>1,102</b> <b>41.7%</b>	<b>763</b> <b>28.9%</b>	<b>2</b> <b>0.1%</b>	<b>2,644</b> <b>100.0%</b>
Indian River	118 20.7%	63 11.1%	236 41.4%	153 26.8%	0 0.0%	<b>570</b> <b>100.0%</b>	141 22.1%	65 10.2%	247 38.8%	183 28.7%	1 0.2%	<b>637</b> <b>100.0%</b>
Martin	160 27.9%	12 2.1%	236 41.1%	166 28.9%	0 0.0%	<b>574</b> <b>100.0%</b>	111 21.6%	8 1.6%	208 40.5%	185 36.1%	1 0.2%	<b>513</b> <b>100.0%</b>
Okeechobee	87 28.3%	11 3.6%	134 43.6%	75 24.4%	0 0.0%	<b>307</b> <b>100.0%</b>	97 30.1%	26 8.1%	130 40.4%	69 21.4%	0 0.0%	<b>322</b> <b>100.0%</b>
St. Lucie	348 27.3%	34 2.7%	545 42.7%	349 27.3%	1 0.1%	<b>1,277</b> <b>100.0%</b>	272 23.2%	57 4.9%	517 44.1%	326 27.8%	0 0.0%	<b>1,172</b> <b>100.0%</b>
<b>20 (Ft. Myers)</b>	<b>722</b> <b>16.2%</b>	<b>194</b> <b>4.3%</b>	<b>2,395</b> <b>53.6%</b>	<b>1,157</b> <b>25.9%</b>	<b>1</b> <b>0.0%</b>	<b>4,469</b> <b>100.0%</b>	<b>785</b> <b>18.1%</b>	<b>137</b> <b>3.2%</b>	<b>2,371</b> <b>54.7%</b>	<b>1,034</b> <b>23.9%</b>	<b>7</b> <b>0.2%</b>	<b>4,334</b> <b>100.0%</b>
Charlotte	138 17.4%	33 4.2%	381 48.2%	239 30.2%	0 0.0%	<b>791</b> <b>100.0%</b>	128 19.9%	22 3.4%	319 49.6%	174 27.1%	0 0.0%	<b>643</b> <b>100.0%</b>
Collier	134 15.2%	41 4.7%	480 54.6%	224 25.5%	0 0.0%	<b>879</b> <b>100.0%</b>	183 18.9%	24 2.5%	522 54.0%	236 24.4%	1 0.1%	<b>966</b> <b>100.0%</b>
Glades	19 28.8%	2 3.0%	36 54.5%	9 13.6%	0 0.0%	<b>66</b> <b>100.0%</b>	43 44.8%	7 7.3%	29 30.2%	16 16.7%	1 1.0%	<b>96</b> <b>100.0%</b>
Hendry	42 17.2%	9 3.7%	147 60.2%	46 18.9%	0 0.0%	<b>244</b> <b>100.0%</b>	66 22.1%	11 3.7%	181 60.5%	41 13.7%	0 0.0%	<b>299</b> <b>100.0%</b>
Lee	389 15.6%	109 4.4%	1,351 54.3%	639 25.7%	1 0.0%	<b>2,489</b> <b>100.0%</b>	365 15.7%	73 3.1%	1,320 56.7%	567 24.3%	5 0.2%	<b>2,330</b> <b>100.0%</b>
<b>Statewide</b>	<b>16,768</b> <b>20.6%</b>	<b>4,221</b> <b>5.2%</b>	<b>38,809</b> <b>47.6%</b>	<b>21,093</b> <b>25.9%</b>	<b>631</b> <b>0.8%</b>	<b>81,522</b> <b>100.0%</b>	<b>16,994</b> <b>19.9%</b>	<b>4,236</b> <b>5.0%</b>	<b>40,188</b> <b>47.0%</b>	<b>23,252</b> <b>27.2%</b>	<b>774</b> <b>0.9%</b>	<b>85,444</b> <b>100.0%</b>

Note: County jail includes those sentenced to time served; prison includes those sentenced to life.

<sup>1</sup> Offense dates on or after October 1, 2015.

<sup>2</sup> Offense dates on or after October 1, 2016.

**Table 3 A**  
**Sanction Imposed By Judicial Circuit and County**

Circuit/County	FY2016-2017 Sentence Dates <sup>1</sup>						FY2017-2018 Sentence Dates <sup>2</sup>					
	State Prison	Community Control	Probation	County Jail	Other Sentence	Total	State Prison	Community Control	Probation	County Jail	Other Sentence	Total
01 (Pensacola)	949	443	2,767	1,228	75	<b>5,462</b>	1,004	424	3,080	1,409	57	<b>5,974</b>
	0	0	1	0	0	<b>100.0%</b>	0	0	1	0	0	<b>100.0%</b>
02 (Tallahassee)	420	115	1,136	441	8	<b>2,120</b>	484	64	1,186	471	12	<b>2,217</b>
	0	0	1	0	0	<b>100.0%</b>	0	0	1	0	0	<b>100.0%</b>
03 (Lake City)	375	189	806	105	58	<b>1,533</b>	397	188	844	105	88	<b>1,622</b>
	0	0	1	0	0	<b>100.0%</b>	0	0	1	0	0	<b>100.0%</b>
04 (Jacksonville)	1,470	70	1,288	1,509	0	<b>4,337</b>	1,349	91	1,426	2,094	5	<b>4,965</b>
	0	0	0	0	0	<b>100.0%</b>	0	0	0	0	0	<b>100.0%</b>
05 (Tavares)	1,592	293	2,461	1,687	61	<b>6,094</b>	2,029	338	2,779	1,496	65	<b>6,707</b>
	0	0	0	0	0	<b>100.0%</b>	0	0	0	0	0	<b>100.0%</b>
06 (Clearwater)	1,219	128	2,659	2,939	82	<b>7,027</b>	1,289	99	2,746	3,552	46	<b>7,732</b>
	0	0	0	0	0	<b>100.0%</b>	0	0	0	0	0	<b>100.0%</b>
07 (Daytona)	980	221	2,492	561	41	<b>4,295</b>	1,019	240	2,692	645	103	<b>4,699</b>
	0	0	1	0	0	<b>100.0%</b>	0	0	1	0	0	<b>100.0%</b>
08 (Gainesville)	750	90	1,054	419	53	<b>2,366</b>	779	109	1,173	412	68	<b>2,541</b>
	0	0	0	0	0	<b>100.0%</b>	0	0	0	0	0	<b>100.0%</b>
09 (Orlando)	1,376	226	3,203	2,652	3	<b>7,460</b>	1,378	185	3,356	3,094	10	<b>8,023</b>
	0	0	0	0	0	<b>100.0%</b>	0	0	0	0	0	<b>100.0%</b>
10 (Bartow)	1,059	281	2,291	665	14	<b>4,310</b>	1,052	241	2,381	727	13	<b>4,414</b>
	0	0	1	0	0	<b>100.0%</b>	0	0	1	0	0	<b>100.0%</b>
11 (Miami)	499	255	2,394	1,672	0	<b>4,820</b>	392	236	2,681	1,854	0	<b>5,163</b>
	0	0	0	0	0	<b>100.0%</b>	0	0	1	0	0	<b>100.0%</b>

**Table 3 A**  
**Sanction Imposed By Judicial Circuit and County**

Circuit/County	FY2016-2017 Sentence Dates <sup>1</sup>						FY2017-2018 Sentence Dates <sup>2</sup>					
	State Prison	Community Control	Probation	County Jail	Other Sentence	Total	State Prison	Community Control	Probation	County Jail	Other Sentence	Total
12 (Sarasota)	693	245	1,736	814	4	<b>3,492</b>	606	254	1,671	931	11	<b>3,473</b>
	0	0	0	0	0	<b>100.0%</b>	0	0	0	0	0	<b>100.0%</b>
13 (Tampa)	1,101	353	2,943	1,507	26	<b>5,930</b>	1,026	417	2,774	1,775	36	<b>6,028</b>
	0	0	0	0	0	<b>100.0%</b>	0	0	0	0	0	<b>100.0%</b>
14 (Panama City)	778	347	1,501	70	118	<b>2,814</b>	739	371	1,922	72	161	<b>3,265</b>
	0	0	1	0	0	<b>100.0%</b>	0	0	1	0	0	<b>100.0%</b>
15 (West Palm Beach)	761	54	1,207	1,706	28	<b>3,756</b>	767	56	1,028	1,658	39	<b>3,548</b>
	0	0	0	0	0	<b>100.0%</b>	0	0	0	0	0	<b>100.0%</b>
16 (Key West)	67	34	279	66	14	<b>460</b>	57	22	285	50	18	<b>432</b>
	0	0	1	0	0	<b>100.0%</b>	0	0	1	0	0	<b>100.0%</b>
17 (Ft. Lauderdale)	505	184	2,490	465	23	<b>3,667</b>	398	148	1,924	295	6	<b>2,771</b>
	0	0	1	0	0	<b>100.0%</b>	0	0	1	0	0	<b>100.0%</b>
18 (Sanford)	739	379	2,556	687	21	<b>4,382</b>	823	460	2,767	815	27	<b>4,892</b>
	0	0	1	0	0	<b>100.0%</b>	0	0	1	0	0	<b>100.0%</b>
19 (Ft. Pierce)	713	120	1,151	743	1	<b>2,728</b>	621	156	1,102	763	2	<b>2,644</b>
	0	0	0	0	0	<b>100.0%</b>	0	0	0	0	0	<b>100.0%</b>
20 (Ft. Myers)	722	194	2,395	1,157	1	<b>4,469</b>	785	137	2,371	1,034	7	<b>4,334</b>
	0	0	1	0	0	<b>100.0%</b>	0	0	1	0	0	<b>100.0%</b>
Statewide	<b>16,768</b>	<b>4,221</b>	<b>38,809</b>	<b>21,093</b>	<b>631</b>	<b>81,522</b>	<b>16,994</b>	<b>4,236</b>	<b>40,188</b>	<b>23,252</b>	<b>774</b>	<b>85,444</b>
	<b>20.6%</b>	<b>5.2%</b>	<b>47.6%</b>	<b>25.9%</b>	<b>0.8%</b>	<b>100.0%</b>	<b>19.9%</b>	<b>5.0%</b>	<b>47.0%</b>	<b>27.2%</b>	<b>0.9%</b>	<b>100.0%</b>

Note: County jail includes those sentenced to time served; prison includes those sentenced to life.

<sup>1</sup> Offense dates on or after October 1, 2015.

<sup>2</sup> Offense dates on or after October 1, 2016.

**Table 4  
Offense Types by Sanction Imposed**

Offense Type		FY2016-2017 Sentence Dates <sup>1</sup>						FY2017-2018 Sentence Dates <sup>2</sup>					
		State Prison	Community Control	Probation	County Jail	Other	Total	State Prison	Community Control	Probation	County Jail	Other	Total
<b>Murder/Manslaughter</b>	Attempt	81	4	5	0	0	<b>90</b>	87	2	3	0	0	<b>92</b>
	Complete	130	5	4	2	0	<b>141</b>	135	2	11	0	1	<b>149</b>
<b>Sexual/Lewd Behavior</b>	Attempt	38	0	8	1	0	<b>47</b>	46	2	5	1	0	<b>54</b>
	Complete	474	31	139	15	1	<b>660</b>	446	17	142	16	4	<b>625</b>
<b>Robbery</b>	Attempt	103	17	65	16	0	<b>201</b>	92	8	45	17	0	<b>162</b>
	Complete	842	130	387	146	7	<b>1,512</b>	816	115	331	130	13	<b>1,405</b>
<b>Violent,Other</b>	Attempt	53	7	35	6	1	<b>102</b>	35	11	45	8	1	<b>100</b>
	Complete	2,723	711	6,195	1,956	87	<b>11,672</b>	2,712	735	5,945	2,075	110	<b>11,577</b>
<b>Burglary</b>	Attempt	109	9	118	46	1	<b>283</b>	114	18	124	41	0	<b>297</b>
	Complete	2,726	555	3,253	1,235	59	<b>7,828</b>	2,712	553	3,157	1,322	109	<b>7,853</b>
<b>Property Theft/Fraud/Damage</b>	Attempt	3	1	11	3	0	<b>18</b>	8	1	12	1	1	<b>23</b>
	Complete	2,673	831	10,344	5,863	173	<b>19,884</b>	2,601	726	9,565	5,650	159	<b>18,701</b>
<b>Drugs</b>	Attempt	37	11	83	52	3	<b>186</b>	35	7	51	59	1	<b>153</b>
	Complete	4,013	1,229	12,813	8,269	217	<b>26,541</b>	4,178	1,326	14,902	9,992	284	<b>30,682</b>
<b>Weapons</b>	Attempt	11	0	10	3	0	<b>24</b>	7	0	11	3	0	<b>21</b>
	Complete	1,208	214	1,396	557	18	<b>3,393</b>	1,261	223	1,648	667	28	<b>3,827</b>
<b>Other</b>	Attempt	24	5	48	21	0	<b>98</b>	36	5	48	13	1	<b>103</b>
	Complete	1,520	461	3,895	2,905	64	<b>8,845</b>	1,673	485	4,143	3,257	62	<b>9,620</b>
<b>Total</b>		<b>16,768</b>	<b>4,221</b>	<b>38,809</b>	<b>21,096</b>	<b>631</b>	<b>81,525</b>	<b>16,994</b>	<b>4,236</b>	<b>40,188</b>	<b>23,252</b>	<b>774</b>	<b>85,444</b>

Note: County jail includes those sentenced to time served; prison includes those sentenced to life.

<sup>1</sup> Offense dates on or after October 1, 2015.

<sup>2</sup> Offense dates on or after October 1, 2016.

**Table 5**  
**Sanction Imposed by Offense Severity Level**

Offense Severity Level	FY2016-2017 Sentence Dates <sup>1</sup>						FY2017-2018 Sentence Dates <sup>2</sup>					
	State Prison	Community Control	Probation	County Jail	Other Sentence	Total	State Prison	Community Control	Probation	County Jail	Other Sentence	Total
<b>1</b>	853 7.7%	388 3.5%	5,147 46.6%	4,576 41.4%	89 0.8%	<b>11,053</b> <b>100.0%</b>	833 7.4%	386 3.4%	5,303 47.0%	4,690 41.6%	70 0.6%	<b>11,282</b> <b>100.0%</b>
<b>2</b>	691 7.7%	329 3.7%	5,241 58.8%	2,570 28.8%	86 1.0%	<b>8,917</b> <b>100.0%</b>	743 8.8%	282 3.3%	4,834 57.0%	2,528 29.8%	91 1.1%	<b>8,478</b> <b>100.0%</b>
<b>3</b>	1,998 8.7%	1,043 4.6%	11,901 51.9%	7,773 33.9%	203 0.9%	<b>22,918</b> <b>100.0%</b>	2,150 8.0%	1,123 4.2%	13,813 51.5%	9,456 35.3%	266 1.0%	<b>26,808</b> <b>100.0%</b>
<b>4</b>	2,240 20.6%	576 5.3%	5,392 49.6%	2,569 23.6%	101 0.9%	<b>10,878</b> <b>100.0%</b>	2,413 21.3%	573 5.1%	5,393 47.6%	2,838 25.0%	117 1.0%	<b>11,334</b> <b>100.0%</b>
<b>5</b>	3,902 31.6%	728 5.9%	5,297 42.8%	2,357 19.1%	83 0.7%	<b>12,367</b> <b>100.0%</b>	3,913 31.6%	725 5.9%	5,264 42.5%	2,371 19.2%	105 0.8%	<b>12,378</b> <b>100.0%</b>
<b>6</b>	1,983 28.0%	487 6.9%	3,826 54.0%	744 10.5%	46 0.6%	<b>7,086</b> <b>100.0%</b>	2,045 28.8%	497 7.0%	3,664 51.6%	830 11.7%	61 0.9%	<b>7,097</b> <b>100.0%</b>
<b>7</b>	3,367 55.8%	475 7.9%	1,703 28.2%	467 7.7%	18 0.3%	<b>6,030</b> <b>100.0%</b>	3,204 54.7%	467 8.0%	1,643 28.0%	495 8.4%	53 0.9%	<b>5,862</b> <b>100.0%</b>
<b>8</b>	904 72.6%	108 8.7%	211 16.9%	20 1.6%	3 0.2%	<b>1,246</b> <b>100.0%</b>	861 71.4%	105 8.7%	203 16.8%	28 2.3%	9 0.7%	<b>1,206</b> <b>100.0%</b>
<b>9</b>	663 78.9%	80 9.5%	79 9.4%	17 2.0%	1 0.1%	<b>840</b> <b>100.0%</b>	646 81.0%	68 8.5%	67 8.4%	15 1.9%	2 0.3%	<b>798</b> <b>100.0%</b>
<b>10</b>	167 87.9%	7 3.7%	12 6.3%	3 1.6%	1 0.5%	<b>190</b> <b>100.0%</b>	183 92.9%	10 5.1%	4 2.0%	0 0.0%	0 0.0%	<b>197</b> <b>100.0%</b>
<b>Total</b>	<b>16,768</b> <b>20.6%</b>	<b>4,221</b> <b>5.2%</b>	<b>38,809</b> <b>47.6%</b>	<b>21,096</b> <b>25.9%</b>	<b>631</b> <b>0.8%</b>	<b>81,525</b> <b>100.0%</b>	<b>16,991</b> <b>19.9%</b>	<b>4,236</b> <b>5.0%</b>	<b>40,188</b> <b>47.0%</b>	<b>23,251</b> <b>27.2%</b>	<b>774</b> <b>0.9%</b>	<b>85,440</b> <b>100.0%</b>

Note: County jail includes those sentenced to time served; prison includes those sentenced to life.

<sup>1</sup> Offense dates on or after October 1, 2015.

<sup>2</sup> Offense dates on or after October 1, 2016.

**Table 6  
State Prison Sentence Length by Offense Severity Level**

Offense Severity Level	FY2016-2017 Sentence Dates <sup>1</sup>					FY2017-2018 Sentence Dates <sup>2</sup>				
	LE 2*	GT 2-LE 4*	GT 4-LE 10*	GT 10*	Total	LE 2*	GT 2-LE 4*	GT 4-LE 10*	GT 10*	Total
1	658 77.2%	136 16.0%	54 6.3%	4 0.5%	<b>852</b> <b>100.0%</b>	624 74.9%	153 18.2%	56 6.7%	1 0.1%	<b>834</b> <b>100.0%</b>
2	534 77.3%	117 16.9%	38 5.5%	2 0.3%	<b>691</b> <b>100.0%</b>	548 73.8%	136 18.3%	57 7.7%	2 0.3%	<b>743</b> <b>100.0%</b>
3	1,546 77.4%	344 17.2%	100 5.0%	8 0.4%	<b>1,998</b> <b>100.0%</b>	1,675 77.9%	369 17.2%	97 4.5%	9 0.4%	<b>2,150</b> <b>100.0%</b>
4	1,467 65.5%	560 25.0%	197 8.8%	16 0.7%	<b>2,240</b> <b>100.0%</b>	1,595 66.1%	557 23.1%	246 10.2%	15 0.6%	<b>2,413</b> <b>100.0%</b>
5	2,061 52.8%	1,322 33.9%	459 11.8%	60 1.5%	<b>3,902</b> <b>100.0%</b>	2,098 53.6%	1,295 33.1%	468 12.0%	52 1.3%	<b>3,913</b> <b>100.0%</b>
6	989 49.9%	554 27.9%	369 18.6%	71 3.6%	<b>1,983</b> <b>100.0%</b>	1,036 50.7%	565 27.6%	355 17.4%	89 4.4%	<b>2,045</b> <b>100.0%</b>
7	922 27.4%	1,251 37.2%	1,004 29.8%	190 5.6%	<b>3,367</b> <b>100.0%</b>	840 26.2%	1,288 40.2%	898 28.0%	178 5.6%	<b>3,204</b> <b>100.0%</b>
8	120 13.3%	207 22.9%	413 45.7%	164 18.1%	<b>904</b> <b>100.0%</b>	115 13.4%	189 22.0%	410 47.6%	147 17.1%	<b>861</b> <b>100.0%</b>
9	83 12.5%	110 16.6%	252 38.0%	218 32.9%	<b>663</b> <b>100.0%</b>	61 9.4%	111 17.2%	273 42.3%	201 31.1%	<b>646</b> <b>100.0%</b>
10	0 0.0%	1 100.0%	0 0.0%	0 0.0%	<b>1</b> <b>100.0%</b>	27 14.8%	15 8.2%	33 18.0%	108 59.0%	<b>183</b> <b>100.0%</b>
<b>Total</b>	<b>8,380</b> <b>50.5%</b>	<b>4,602</b> <b>27.7%</b>	<b>2,886</b> <b>17.4%</b>	<b>733</b> <b>4.4%</b>	<b>16,601</b> <b>100.0%</b>	<b>8,619</b> <b>50.7%</b>	<b>4,678</b> <b>27.5%</b>	<b>2,893</b> <b>17.0%</b>	<b>802</b> <b>4.7%</b>	<b>16,992</b> <b>100.0%</b>

\* LE = Less than or equal to; GT = Greater than

<sup>1</sup> Offense dates on or after October 1, 2015.

<sup>2</sup> Offense dates on or after October 1, 2016.



**Table 7  
Number of Prior Offenses\***

Prior Offenses	FY2016-2017 Sentence Dates <sup>1</sup>		FY2017-2018 Sentence Dates <sup>2</sup>	
	Number	Percent	Number	Percent
None	16,988	20.8%	17,826	20.9%
Misdemeanor Only	20,870	25.6%	21,255	24.9%
One Felony	15,729	19.3%	16,513	19.3%
Two Felonies	11,364	13.9%	12,005	14.1%
Three Felonies	7,331	9.0%	7,968	9.3%
Four Felonies	4,484	5.5%	4,731	5.5%
Five Felonies	2,377	2.9%	2,596	3.0%
Six Felonies	1,237	1.5%	1,386	1.6%
Seven or More Felonies	1,145	1.4%	1,164	1.4%
<b>Total</b>	<b>81,525</b>	<b>100.0%</b>	<b>85,444</b>	<b>100.0%</b>

\* As indicated on the scoresheet.

**Table 8  
Number of Additional Offenses\***

Additional Offenses	FY2016-2017 Sentence Dates <sup>1</sup>		FY2017-2018 Sentence Dates <sup>2</sup>	
	Number	Percent	Number	Percent
None	37,480	46.0%	37,932	44.4%
Misdemeanor Only	21,627	26.5%	23,527	27.5%
One Felony	14,267	17.5%	15,259	17.9%
Two Felonies	4,655	5.7%	5,001	5.9%
Three Felonies	1,849	2.3%	1,944	2.3%
Four Felonies	739	0.9%	833	1.0%
Five Felonies	432	0.5%	383	0.4%
Six Felonies	182	0.2%	211	0.2%
Seven or More Felonies	294	0.4%	354	0.4%
<b>Total</b>	<b>81,525</b>	<b>100.0%</b>	<b>85,444</b>	<b>100.0%</b>

\* As indicated on the scoresheet.

<sup>1</sup> Offense dates on or after October 1, 2015.

<sup>2</sup> Offense dates on or after October 1, 2016.

**Table 9**  
**Prior Felony Record\* and Sanction Imposed**

Number of Prior Felonies	FY2016-2017 Sentence Dates <sup>1</sup>						FY2017-2018 Sentence Dates <sup>2</sup>					
	State Prison	Community Control	Probation	County Jail	Other Sentence	Total	State Prison	Community Control	Probation	County Jail	Other Sentence	Total
None	3,924 10.4%	2,137 5.6%	24,139 63.8%	7,263 19.2%	395 1.0%	<b>37,858</b> <b>100.0%</b>	4,067 10.4%	2,048 5.2%	24,539 62.8%	7,962 20.4%	465 1.2%	<b>39,081</b> <b>100.0%</b>
One	2,999 19.1%	821 5.2%	6,746 42.9%	5,055 32.1%	108 0.7%	<b>15,729</b> <b>100.0%</b>	2,771 16.8%	874 5.3%	7,113 43.1%	5,616 34.0%	139 0.8%	<b>16,513</b> <b>100.0%</b>
Two	3,096 27.2%	559 4.9%	3,906 34.4%	3,742 32.9%	61 0.5%	<b>11,364</b> <b>100.0%</b>	3,074 25.6%	593 4.9%	4,110 34.2%	4,146 34.5%	82 0.7%	<b>12,005</b> <b>100.0%</b>
Three	2,544 34.7%	348 4.7%	2,069 28.2%	2,337 31.9%	33 0.5%	<b>7,331</b> <b>100.0%</b>	2,714 34.1%	360 4.5%	2,313 29.0%	2,527 31.7%	54 0.7%	<b>7,968</b> <b>100.0%</b>
Four	1,836 40.9%	187 4.2%	1,068 23.8%	1,371 30.6%	22 0.5%	<b>4,484</b> <b>100.0%</b>	1,916 40.5%	162 3.4%	1,172 24.8%	1,456 30.8%	25 0.5%	<b>4,731</b> <b>100.0%</b>
Five	1,130 47.5%	77 3.2%	498 21.0%	666 28.0%	6 0.3%	<b>2,377</b> <b>100.0%</b>	1,164 44.8%	111 4.3%	551 21.2%	762 29.4%	8 0.3%	<b>2,596</b> <b>100.0%</b>
Six	627 50.7%	52 4.2%	219 17.7%	336 27.2%	3 0.2%	<b>1,237</b> <b>100.0%</b>	694 50.1%	40 2.9%	231 16.7%	420 30.3%	1 0.1%	<b>1,386</b> <b>100.0%</b>
Seven or More	612 53.4%	40 3.5%	164 14.3%	326 28.5%	3 0.3%	<b>1,145</b> <b>100.0%</b>	594 51.0%	48 4.1%	159 13.7%	363 31.2%	0 0.0%	<b>1,164</b> <b>100.0%</b>
<b>Total</b>	<b>16,768</b> <b>20.6%</b>	<b>4,221</b> <b>5.2%</b>	<b>38,809</b> <b>47.6%</b>	<b>21,096</b> <b>25.9%</b>	<b>631</b> <b>0.8%</b>	<b>81,525</b> <b>100.0%</b>	<b>16,994</b> <b>19.9%</b>	<b>4,236</b> <b>5.0%</b>	<b>40,188</b> <b>47.0%</b>	<b>23,252</b> <b>27.2%</b>	<b>774</b> <b>0.9%</b>	<b>85,444</b> <b>100.0%</b>

\* As indicated on the scoresheet

Note: County jail includes those sentenced to time served; prison includes those sentenced to life.

<sup>1</sup> Offense dates on or after October 1, 2015.

<sup>2</sup> Offense dates on or after October 1, 2016.

**Table 10**  
**Additional Offenses\* and Sanction Imposed**

Number of Additional Felonies	FY2016-2017 Sentence Dates <sup>1</sup>						FY2017-2018 Sentence Dates <sup>2</sup>					
	State Prison	Community Control	Probation	County Jail	Other Sentence	Total	State Prison	Community Control	Probation	County Jail	Other Sentence	Total
None	8,131 13.8%	2,706 4.6%	30,484 51.6%	17,291 29.3%	495 0.8%	<b>59,107</b> <b>100.0%</b>	8,054 13.1%	2,639 4.3%	31,329 51.0%	18,863 30.7%	574 0.9%	<b>61,459</b> <b>100.0%</b>
One	4,282 30.0%	976 6.8%	6,060 42.5%	2,853 20.0%	96 0.7%	<b>14,267</b> <b>100.0%</b>	4,288 28.1%	1,002 6.6%	6,477 42.4%	3,360 22.0%	132 0.9%	<b>15,259</b> <b>100.0%</b>
Two	2,110 45.3%	318 6.8%	1,535 33.0%	664 14.3%	28 0.6%	<b>4,655</b> <b>100.0%</b>	2,241 44.8%	359 7.2%	1,615 32.3%	744 14.9%	42 0.8%	<b>5,001</b> <b>100.0%</b>
Three	1,069 57.8%	126 6.8%	451 24.4%	200 10.8%	3 0.2%	<b>1,849</b> <b>100.0%</b>	1,128 58.0%	139 7.2%	465 23.9%	196 10.1%	16 0.8%	<b>1,944</b> <b>100.0%</b>
Four	486 65.8%	46 6.2%	148 20.0%	56 7.6%	3 0.4%	<b>739</b> <b>100.0%</b>	558 67.0%	49 5.9%	167 20.0%	56 6.7%	3 0.4%	<b>833</b> <b>100.0%</b>
Five	311 72.0%	22 5.1%	74 17.1%	24 5.6%	1 0.2%	<b>432</b> <b>100.0%</b>	279 72.8%	18 4.7%	66 17.2%	19 5.0%	1 0.3%	<b>383</b> <b>100.0%</b>
Six	150 82.4%	4 2.2%	22 12.1%	5 2.7%	1 0.5%	<b>182</b> <b>100.0%</b>	165 78.2%	10 4.7%	27 12.8%	8 3.8%	1 0.5%	<b>211</b> <b>100.0%</b>
Seven or More	229 77.9%	23 7.8%	35 11.9%	3 1.0%	4 1.4%	<b>294</b> <b>100.0%</b>	281 79.4%	20 5.6%	42 11.9%	6 1.7%	5 1.4%	<b>354</b> <b>100.0%</b>
<b>Total</b>	<b>16,768</b> <b>20.6%</b>	<b>4,221</b> <b>5.2%</b>	<b>38,809</b> <b>47.6%</b>	<b>21,096</b> <b>25.9%</b>	<b>631</b> <b>0.8%</b>	<b>81,525</b> <b>100.0%</b>	<b>16,994</b> <b>19.9%</b>	<b>4,236</b> <b>5.0%</b>	<b>40,188</b> <b>47.0%</b>	<b>23,252</b> <b>27.2%</b>	<b>774</b> <b>0.9%</b>	<b>85,444</b> <b>100.0%</b>

\* As indicated on the scoresheet.

Note: County jail includes those sentenced to time served; prison includes those sentenced to life.

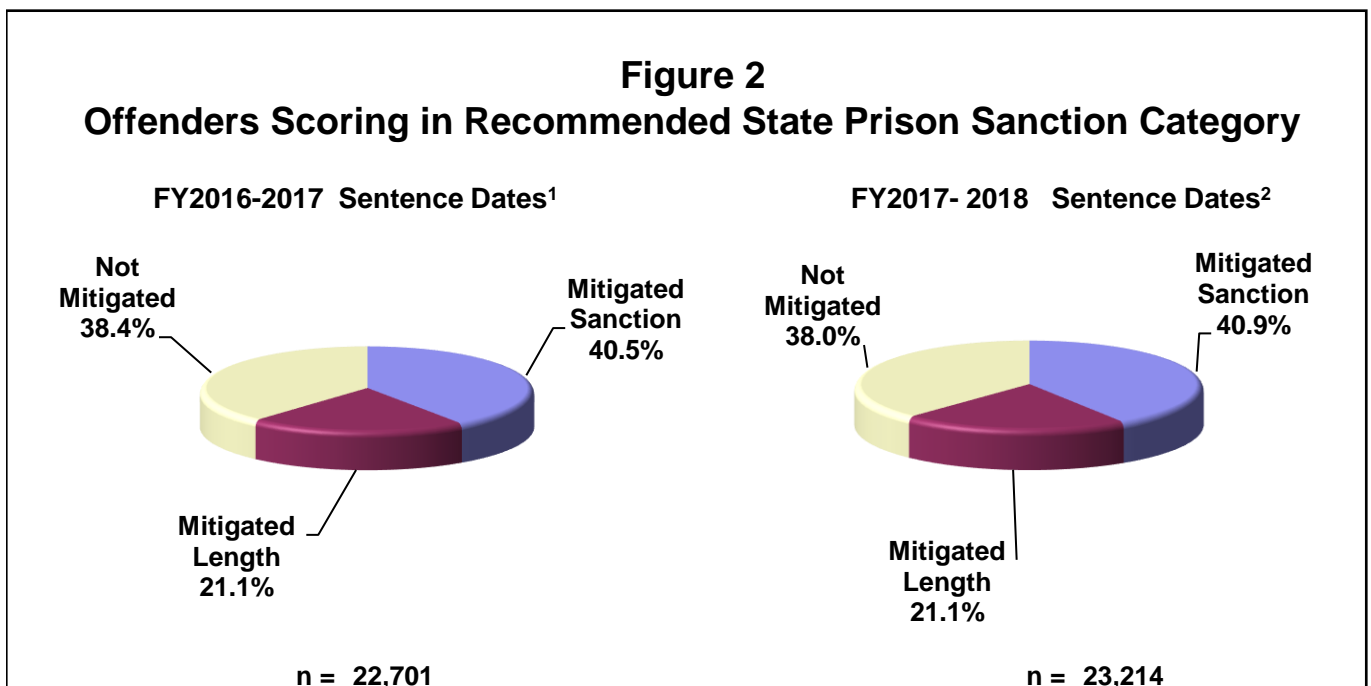
<sup>1</sup> Offense dates on or after October 1, 2015.

<sup>2</sup> Offense dates on or after October 1, 2016.

**Table 11**  
**Mitigation Rates\* Among Offenders Scoring in Recommended**  
**State Prison Sanction Category**

Category	FY2016-2017 Sentence Dates <sup>1</sup>		FY2017-2018 Sentence Dates <sup>2</sup>	
	Number / Percent	Average Mitigated Length in Months	Number / Percent	Average Mitigated Length in Months
Mitigated Total	13,987 61.6%		14,401 62.0%	
Mitigated Sanction	9,186 40.5%		9,500 40.9%	
Mitigated Length	4,801 21.1%	22.8	4,901 21.1%	26.1
Not Mitigated	8,714 38.4%		8,813 38.0%	
<b>Total</b>	<b>22,701</b> <b>100.0%</b>		<b>23,214</b> <b>100.0%</b>	

\* This total rate includes both mitigated sanction and mitigated length sentences. Offenders scoring to state prison who receive a Drug Offender Probation sentence are not counted as mitigated.



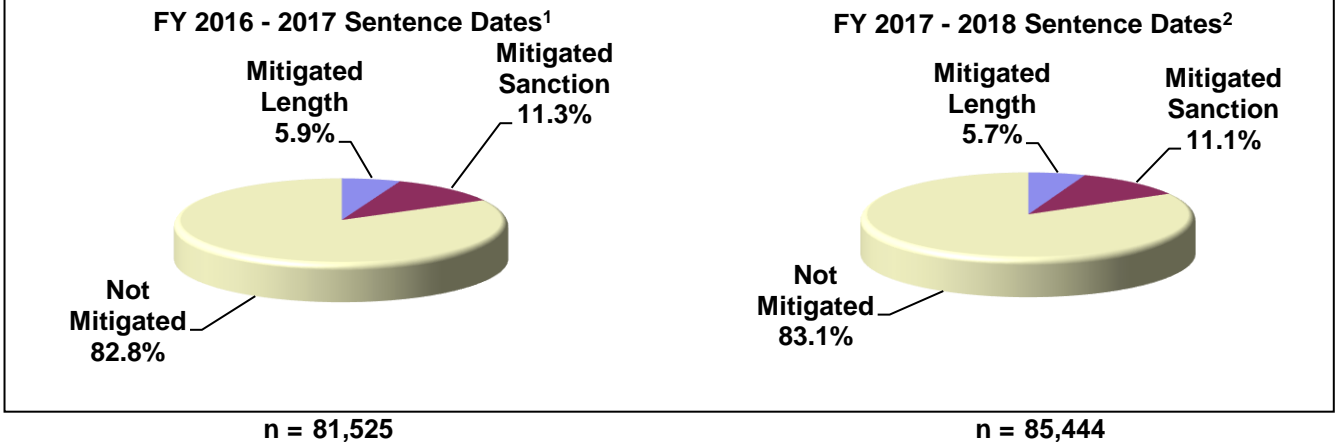
\* Total points exceeding 44.0

<sup>1</sup> Offense dates on or after October 1, 2015.

<sup>2</sup> Offense dates on or after October 1, 2016.

**Figure 3**

**Deviation Rates Below Permitted Sentences Among All Offenders Sentenced**



**Table 12**  
**Mitigated Sanction Rates\* By Judicial Circuit**

Judicial Circuit	FY2016-2017 Sentence Dates <sup>1</sup>			FY2017-2018 Sentence Dates <sup>2</sup>		
	Scoresheets Exceeding 44.0 Total Points	Scoresheets Mitigated	Mitigation Rate	Scoresheets Exceeding 44.0 Total Points	Scoresheets Mitigated	Mitigation Rate
01- Pensacola	1,098	364	33.2%	1,185	436	36.8%
02- Tallahassee	735	375	51.0%	761	340	44.7%
03- Lake City	471	205	43.5%	453	191	42.2%
04- Jacksonville	1,369	353	25.8%	1,318	403	30.6%
05- Tavares	1,756	459	26.1%	2,120	549	25.9%
06- Clearwater	1,687	629	37.3%	1,774	685	38.6%
07- Daytona	927	317	34.2%	1,181	456	38.6%
08- Gainesville	718	197	27.4%	790	248	31.4%
09- Orlando	1,961	831	42.4%	1,998	841	42.1%
10- Bartow	1,055	228	21.6%	1,021	206	20.2%
11- Miami	1,897	1,424	75.1%	1,787	1,410	78.9%
12- Sarasota	872	277	31.8%	806	254	31.5%
13- Tampa	2,340	1,282	54.8%	2,374	1,383	58.3%
14- Panama City	794	270	34.0%	902	372	41.2%
15- West Palm Beach	1,326	646	48.7%	1,266	597	47.2%
16- Key West	114	66	57.9%	92	45	48.9%
17- Ft. Lauderdale	1,100	400	36.4%	824	200	24.3%
18- Sanford	1,024	391	38.2%	1,124	439	39.1%
19- Ft. Pierce	518	110	21.2%	511	141	27.6%
20- Ft. Myers	939	362	38.6%	927	304	32.8%
<b>Statewide</b>	<b>22,701</b>	<b>9,186</b>	<b>40.5%</b>	<b>23,214</b>	<b>9,500</b>	<b>40.9%</b>

\* Mitigation of sanction occurs when an offender does not receive a prison sanction although a prison sanction is mandated by the Criminal Punishment Code. Those receiving Drug Offender Probation are not included.

<sup>1</sup> Offense dates on or after October 1, 2015.

<sup>2</sup> Offense dates on or after October 1, 2016.

**Table 13**

**Mitigated Sanction Rates and Mitigated Length Rates\* By Judicial Circuit**

Judicial Circuit	FY2016-2017 Sentence Dates <sup>1</sup>			FY2017-2018 Sentence Dates <sup>2</sup>		
	Scoresheets Exceeding 44.0 Total Points	Scoresheets Mitigated	Mitigation Rate	Scoresheets Exceeding 44.0 Total Points	Scoresheets Mitigated	Mitigation Rate
01- Pensacola	1,098	478	43.5%	1,185	539	45.5%
02- Tallahassee	735	591	80.4%	761	580	76.2%
03- Lake City	471	304	64.5%	453	285	62.9%
04- Jacksonville	1,369	672	49.1%	1,318	713	54.1%
05- Tavares	1,756	772	44.0%	2,120	947	44.7%
06- Clearwater	1,687	1,104	65.4%	1,774	1,231	69.4%
07- Daytona	927	579	62.5%	1,181	747	63.3%
08- Gainesville	718	411	57.2%	790	457	57.8%
09- Orlando	1,961	1,233	62.9%	1,998	1,262	63.2%
10- Bartow	1,055	372	35.3%	1,021	341	33.4%
11- Miami	1,897	1,733	91.4%	1,787	1,655	92.6%
12- Sarasota	872	365	41.9%	806	328	40.7%
13- Tampa	2,340	1,989	85.0%	2,374	2,081	87.7%
14- Panama City	794	468	58.9%	902	564	62.5%
15- West Palm Beach	1,326	1,053	79.4%	1,266	991	78.3%
16- Key West	114	80	70.2%	92	60	65.2%
17- Ft. Lauderdale	1,100	567	51.5%	824	340	41.3%
18- Sanford	1,024	585	57.1%	1,124	670	59.6%
19- Ft. Pierce	518	176	34.0%	511	199	38.9%
20- Ft. Myers	939	455	48.5%	927	411	44.3%
<b>Statewide</b>	<b>22,701</b>	<b>13,987</b>	<b>61.6%</b>	<b>23,214</b>	<b>14,401</b>	<b>62.0%</b>

\* Mitigation of sanction occurs when an offender does not receive a prison sanction although a prison sanction is mandated by the Criminal Punishment Code. Those receiving Drug Offender Probation are not included. Mitigated length occurs when an offender receives a prison sentence below the 25% permissible discretion existing within the Criminal Punishment Code. This total rate includes both mitigated sanction and mitigated length sentences.

<sup>1</sup> Offense dates on or after October 1, 2015.

<sup>2</sup> Offense dates on or after October 1, 2016.

**Table 14**  
**Mitigation Rates\* Among Offenders Scoring in Recommended State Prison Sanction Category\*\***

Offense Type		FY2016-2017 Sentence Dates <sup>1</sup>					FY2017-2018 Sentence Dates <sup>2</sup>				
		Total Mitigated	Mitigated Sanction	Mitigated Length	Not Mitigated	Total	Total Mitigated	Mitigated Sanction	Mitigated Length	Not Mitigated	Total
Murder/Manslaughter	Attempt	26	8	18	64	90	25	4	21	67	92
	Complete	54	10	44	86	140	64	12	52	84	148
Sexual/Lewd Behavior	Attempt	15	5	10	26	41	15	7	8	36	51
	Complete	285	123	162	291	576	283	115	168	260	543
Robbery	Attempt	57	30	27	62	119	41	18	23	55	96
	Complete	565	288	277	511	1,076	523	235	288	470	993
Violent, Other	Attempt	24	12	12	34	58	21	18	3	29	50
	Complete	3,189	2,337	852	1,483	4,672	3,113	2,310	803	1,533	4,646
Burglary	Attempt	66	41	25	75	141	77	56	21	83	160
	Complete	2,580	1,601	979	1,553	4,133	2,561	1,561	1,000	1,501	4,062
Property Theft/Fraud/Damage	Attempt	1	0	1	1	2	1	1	0	7	8
	Complete	1,931	1,329	602	1,179	3,110	1,835	1,257	578	1,170	3,005
Drugs	Attempt	40	29	11	18	58	16	11	5	18	34
	Complete	3,053	2,000	1,053	2,004	5,057	3,323	2,237	1,086	2,100	5,423
Weapons	Attempt	3	2	1	9	12	3	2	1	3	6
	Complete	595	375	220	665	1,260	658	414	244	685	1,343
Other	Attempt	18	9	9	9	27	13	9	4	25	38
	Complete	1,485	987	498	644	2,129	1,829	1,233	596	687	2,516
<b>Total</b>		<b>13,987</b>	<b>9,186</b>	<b>4,801</b>	<b>8,714</b>	<b>22,701</b>	<b>14,401</b>	<b>9,500</b>	<b>4,901</b>	<b>8,813</b>	<b>23,214</b>

\* Mitigation of sanction occurs when an offender does not receive a prison sanction although a prison sanction is mandated by the Criminal Punishment Code. Those receiving Drug Offender Probation are not included. Mitigated length occurs when an offender receives a prison sentence below the 25% permissible discretion existing within the Criminal Punishment Code. This total rate includes both mitigated sanction and mitigated length sentences.

\*\* Total Points Exceeding 44.0.

<sup>1</sup> Offense dates on or after October 1, 2015.

<sup>2</sup> Offense dates on or after October 1, 2016.

# APPENDICES



# Inmate Prison Admissions by County of Commitment

July 1, 2017 through June 30, 2018

This table represents the 67 counties in Florida and the number of inmates admitted into prison who were sentenced from each county or other states.

County	Number of Inmates Admitted to Prison	Percent	Rank
Alachua	629	2.3%	15
Baker	161	0.6%	41
Bay	765	2.8%	12
Bradford	74	0.3%	52
Brevard	1,011	3.7%	10
Broward	1,307	4.8%	5
Calhoun	46	0.2%	60
Charlotte	225	0.8%	31
Citrus	360	1.3%	26
Clay	253	0.9%	30
Collier	335	1.2%	27
Columbia	322	1.2%	28
Miami-Dade	1,111	4.1%	8
Desoto	116	0.4%	46
Dixie	52	0.2%	58
Duval	1,554	5.7%	3
Escambia	853	3.1%	11
Flagler	100	0.4%	49
Franklin	53	0.2%	57
Gadsden	44	0.2%	62
Gilchrist	63	0.2%	54
Glades	50	0.2%	59
Gulf	62	0.2%	55
Hamilton	19	0.1%	66
Hardee	64	0.2%	53
Hendry	123	0.4%	44
Hernando	434	1.6%	23
Highlands	164	0.6%	40
Hillsborough	1,766	6.5%	1
Holmes	99	0.4%	50
Indian River	218	0.8%	32
Jackson	153	0.6%	42
Jefferson	27	0.1%	64
Lafayette	12	0.0%	67
Lake	279	1.0%	29

County	Number of Inmates Admitted to Prison	Percent	Rank
Lee	611	2.2%	17
Leon	758	2.8%	13
Levy	80	0.3%	51
Liberty	25	0.1%	65
Madison	41	0.1%	63
Manatee	504	1.8%	19
Marion	603	2.2%	18
Martin	200	0.7%	34
Monroe	171	0.6%	37
Nassau	111	0.4%	47
Okaloosa	455	1.7%	21
Okeechobee	164	0.6%	40
Orange	1,125	4.1%	7
Osceola	443	1.6%	22
Palm Beach	1,223	4.5%	6
Pasco	651	2.4%	14
Pinellas	1,470	5.4%	4
Polk	1,648	6.0%	2
Putnam	169	0.6%	38
St. Johns	372	1.4%	25
St. Lucie	618	2.3%	16
Santa Rosa	217	0.8%	33
Sarasota	425	1.6%	24
Seminole	457	1.7%	20
Sumter	179	0.7%	36
Suwannee	184	0.7%	35
Taylor	110	0.4%	48
Union	44	0.2%	62
Volusia	1,057	3.9%	9
Wakulla	58	0.2%	56
Walton	145	0.5%	43
Washington	116	0.4%	46
00-Interstate	18		
Data Unavailable	561		
<b>Total</b>	<b>27,917</b>		

# Inmate Prison Admissions by Circuit of Commitment

July 1, 2017 through June 30, 2018

Judicial Circuit	Number of Inmated Admitted to Prison	Percent	Rank FY 2017-18
1 (Pensacola)	1,670	6.1%	7
2 (Tallahassee)	965	3.5%	18
3 (Lake City)	740	2.7%	19
4 (Jacksonville)	1,918	7.0%	2
5 (Tavares)	1,855	6.8%	4
6 (Clearwater)	2,121	7.8%	1
7 (Daytona)	1,698	6.2%	6
8 (Gainesville)	1,051	3.8%	16
9 (Orlando)	1,568	5.7%	8
10 (Bartow)	1,876	6.9%	3
11 (Miami)	1,111	4.1%	15
12 (Sarasota)	1,045	3.8%	17
13 (Tampa)	1,766	6.5%	5
14 (Panama City)	1,241	4.5%	12
15 (West Palm Beach)	1,223	4.5%	13
16 (Key West)	171	0.6%	20
17 (Ft. Lauderdale)	1,307	4.8%	11
18 (Sanford)	1,468	5.4%	9
19 (Ft. Pierce)	1,200	4.4%	14
20 (Ft. Myers)	1,344	4.9%	10
Data Unavailable	579		
<b>Total</b>	<b>27,917</b>		

## Rule 3.992(a) Criminal Punishment Code Scoresheet

The Criminal Punishment Code Scoresheet Preparation Manual is available at: [http://www.dc.state.fl.us/pub/sen\\_cpcm/index.html](http://www.dc.state.fl.us/pub/sen_cpcm/index.html)

1. DATE OF SENTENCE	2. PREPARER'S NAME	3. COUNTY	4. SENTENCING JUDGE	
5. NAME (LAST, FIRST, MI.)	6. DOB	8. RACE <input type="checkbox"/> B <input type="checkbox"/> W <input type="checkbox"/> OTHER		10. PRIMARY OFF. DATE
	7. DC #	9. GENDER <input type="checkbox"/> M <input type="checkbox"/> F		11. PRIMARY DOCKET #
12. PLEA <input type="checkbox"/>				
TRIAL <input type="checkbox"/>				

**I. PRIMARY OFFENSE:** If Qualifier, please check \_\_\_A \_\_\_S \_\_\_C \_\_\_R (A=Attempt, S=Solicitation, C=Conspiracy, R=Reclassification)

FELONY DEGREE	F.S.#	DESCRIPTION	OFFENSE LEVEL	POINTS
---------------	-------	-------------	---------------	--------

\_\_\_\_\_/\_\_\_\_\_/\_\_\_\_\_/\_\_\_\_\_/\_\_\_\_\_

(Level - Points: 1=4, 2=10, 3=16, 4=22, 5=28, 6=36, 7=56, 8=74, 9=92, 10=116)

Prior capital felony triples Primary Offense points  **I.** \_\_\_\_\_

**II. ADDITIONAL OFFENSE(S):** Supplemental page attached

DOCKET#	FEL/MM DEGREE	F.S.#	OFFENSE LEVEL	QUALIFY A S C R	COUNTS	POINTS	TOTAL
---------	---------------	-------	---------------	-----------------	--------	--------	-------

_____/_____/_____/_____/_____	<input type="checkbox"/>	<input type="checkbox"/>	<input type="checkbox"/>	<input type="checkbox"/>	_____	x _____	= _____
DESCRIPTION _____							
_____/_____/_____/_____/_____	<input type="checkbox"/>	<input type="checkbox"/>	<input type="checkbox"/>	<input type="checkbox"/>	_____	x _____	= _____
DESCRIPTION _____							
_____/_____/_____/_____/_____	<input type="checkbox"/>	<input type="checkbox"/>	<input type="checkbox"/>	<input type="checkbox"/>	_____	x _____	= _____
DESCRIPTION _____							
_____/_____/_____/_____/_____	<input type="checkbox"/>	<input type="checkbox"/>	<input type="checkbox"/>	<input type="checkbox"/>	_____	x _____	= _____
DESCRIPTION _____							

(Level - Points: M=0.2, 1=0.7, 2=1.2, 3=2.4, 4=3.6, 5=5.4, 6=18, 7=28, 8=37, 9=46, 10=58)

Prior capital felony triples Additional Offense points  Supplemental page points \_\_\_\_\_ **II.** \_\_\_\_\_

**III. VICTIM INJURY:**

	Number	Total		Number	Total
2nd Degree Murder	240 x _____	= _____	Slight	4 x _____	= _____
Death	120 x _____	= _____	Sex Penetration	80 x _____	= _____
Severe	40 x _____	= _____	Sex Contact	40 x _____	= _____
Moderate	18 x _____	= _____			

**III.** \_\_\_\_\_

**IV. PRIOR RECORD:** Supplemental page attached

FEL/MM DEGREE	F.S.#	OFFENSE LEVEL	QUALIFY: A S C R	DESCRIPTION	NUMBER	POINTS	TOTAL
_____/_____/_____/_____/_____	<input type="checkbox"/>	<input type="checkbox"/>	<input type="checkbox"/>	<input type="checkbox"/>	_____	_____	X _____ = _____
_____/_____/_____/_____/_____	<input type="checkbox"/>	<input type="checkbox"/>	<input type="checkbox"/>	<input type="checkbox"/>	_____	_____	X _____ = _____
_____/_____/_____/_____/_____	<input type="checkbox"/>	<input type="checkbox"/>	<input type="checkbox"/>	<input type="checkbox"/>	_____	_____	X _____ = _____
_____/_____/_____/_____/_____	<input type="checkbox"/>	<input type="checkbox"/>	<input type="checkbox"/>	<input type="checkbox"/>	_____	_____	X _____ = _____
_____/_____/_____/_____/_____	<input type="checkbox"/>	<input type="checkbox"/>	<input type="checkbox"/>	<input type="checkbox"/>	_____	_____	X _____ = _____
_____/_____/_____/_____/_____	<input type="checkbox"/>	<input type="checkbox"/>	<input type="checkbox"/>	<input type="checkbox"/>	_____	_____	X _____ = _____
_____/_____/_____/_____/_____	<input type="checkbox"/>	<input type="checkbox"/>	<input type="checkbox"/>	<input type="checkbox"/>	_____	_____	X _____ = _____
_____/_____/_____/_____/_____	<input type="checkbox"/>	<input type="checkbox"/>	<input type="checkbox"/>	<input type="checkbox"/>	_____	_____	X _____ = _____

(Level = Points: M=0.2, 1=0.5, 2=0.8, 3=1.6, 4=2.4, 5=3.6, 6=9, 7=14, 8=19, 9=23, 10=29)

Supplemental page points \_\_\_\_\_ **IV.** \_\_\_\_\_

**Page 1 Subtotal:** \_\_\_\_\_

Effective Date: For offenses committed under the Criminal Punishment Code effective for offenses committed on or after October 1, 1998 and subsequent revisions.

<b>NAME (LAST, FIRST, MI)</b>	<b>DOCKET #</b>
-------------------------------	-----------------

Page 1 Subtotal: \_\_\_\_\_

V. Legal Status violation = 4 Points  
 Escape  Fleeing  Failure to appear  Supersedeas bond  Incarceration  Pretrial intervention or diversion program  
 Court imposed or post prison release community supervision resulting in a conviction **V.** \_\_\_\_\_

VI. Community Sanction violation before the court for sentencing  
 Probation  Community Control  Pretrial Intervention or diversion **VI.** \_\_\_\_\_  
 6 points for any violation other than new felony conviction x \_\_\_\_\_ each successive violation OR  
 New felony conviction = 12 points x \_\_\_\_\_ each successive violation if new offense results in conviction before or at same time as sentence for violation of probation OR  
 12 points x \_\_\_\_\_ each successive violation for a violent felony offender of special concern when the violation is not based solely on failure to pay costs, fines, or restitution OR  
 New felony conviction = 24 points x \_\_\_\_\_ each successive violation for a violent felony offender of special concern if new offense results in a conviction before or at the same time for violation of probation

VII. Firearm/Semi-Automatic or Machine Gun = 18 or 25 Points **VII.** \_\_\_\_\_

VIII. Prior Serious Felony - 30 Points **VIII.** \_\_\_\_\_

Subtotal Sentence Points \_\_\_\_\_

IX. Enhancements (only if the primary offense qualifies for enhancement)

Law Enf. Protect.	Drug Trafficker	Motor Vehicle Theft	Criminal Gang Offense	Domestic Violence in the Presence of Related Child <small>(offenses committed on or after 3/12/07)</small>	Adult-on-Minor Sex Offense <small>(offenses committed on or after 10/1/14)</small>
_____ x 1.5	_____ x 2.0	_____ x 2.5	_____ x 1.5	_____ x 1.5	_____ x 2.0

Enhanced Subtotal Sentence Points **IX.** \_\_\_\_\_

**TOTAL SENTENCE POINTS** \_\_\_\_\_

### SENTENCE COMPUTATION

If total sentence points are less than or equal to 44, the lowest permissible sentence is any non-state prison sanction. If the total sentence points are 22 points or less, see Section 775.082(10), Florida Statutes, to determine if the court must sentence the offender to a non-state prison sanction.

If total sentence points are greater than 44:  
 \_\_\_\_\_ minus 28 = \_\_\_\_\_ x .75 = \_\_\_\_\_  
 total sentence points lowest permissible prison sentence in months  
 If total sentence points are 60 points or less and court makes findings pursuant to both Florida Statute 948.20 and 397.334(3), the court may place the defendant into a treatment-based drug court program.

The maximum sentence is up to the statutory maximum for the primary and any additional offenses as provided in s. 775.082, F.S., unless the lowest permissible sentence under the Code exceeds the statutory maximum. Such sentences may be imposed concurrently or consecutively. If total sentence points are greater than or equal to 363, a life sentence may be imposed.  
 \_\_\_\_\_  
 maximum sentence In years

### TOTAL SENTENCE IMPOSED

	Years	Months	Days
<input type="checkbox"/> State Prison	_____	_____	_____
<input type="checkbox"/> County Jail	_____	_____	_____
<input type="checkbox"/> Community Control	_____	_____	_____
<input type="checkbox"/> Probation <input type="checkbox"/> Modified	_____	_____	_____

Please check if sentenced as  habitual offender,  habitual violent offender,  violent career criminal,  prison releasee reoffender, or a  mandatory minimum applies.

Mitigated Departure  Plea Bargain  Prison Diversion Program

Other Reason \_\_\_\_\_

<b>JUDGE'S SIGNATURE</b>	
--------------------------	--

Effective Date: For offenses committed under the Criminal Punishment Code effective for offenses committed on or after October 1, 1998, and subsequent revisions.

**RULE 3.992(b) Supplemental Criminal Punishment Code Scoresheet**

NAME (LAST, FIRST, MI.I)	DOCKET #	DATE OF SENTENCE
--------------------------	----------	------------------

**II. ADDITIONAL OFFENSES(S):**

DOCKET#	FEL/MM DEGREE	F.S.#	OFFENSE LEVEL	QUALIFY A S C R	COUNTS	POINTS	TOTAL
_____ / _____ / _____ /	_____ / _____ /	_____ /	_____	<input type="checkbox"/> <input type="checkbox"/> <input type="checkbox"/> <input type="checkbox"/>	_____ x	_____ =	_____
DESCRIPTION _____							
_____ / _____ / _____ /	_____ / _____ /	_____ /	_____	<input type="checkbox"/> <input type="checkbox"/> <input type="checkbox"/> <input type="checkbox"/>	_____ x	_____ =	_____
DESCRIPTION _____							
_____ / _____ / _____ /	_____ / _____ /	_____ /	_____	<input type="checkbox"/> <input type="checkbox"/> <input type="checkbox"/> <input type="checkbox"/>	_____ x	_____ =	_____
DESCRIPTION _____							
_____ / _____ / _____ /	_____ / _____ /	_____ /	_____	<input type="checkbox"/> <input type="checkbox"/> <input type="checkbox"/> <input type="checkbox"/>	_____ x	_____ =	_____
DESCRIPTION _____							

(Level - Points: M=0.2, 1=0.7, 2=1.2, 3=2.4, 4=3.6, 5=5.4, 6=18, 7=28, 8=37, 9=46, 10=58)

II. \_\_\_\_\_

**IV. PRIOR RECORD**

FEL/MM DEGREE	F.S.#	OFFENSE LEVEL	QUALIFY: A S C R	DESCRIPTION	NUMBER	POINTS	TOTAL
_____ / _____ /	_____ /	_____	<input type="checkbox"/> <input type="checkbox"/> <input type="checkbox"/> <input type="checkbox"/>	_____	_____ X	_____ =	_____
_____ / _____ /	_____ /	_____	<input type="checkbox"/> <input type="checkbox"/> <input type="checkbox"/> <input type="checkbox"/>	_____	_____ X	_____ =	_____
_____ / _____ /	_____ /	_____	<input type="checkbox"/> <input type="checkbox"/> <input type="checkbox"/> <input type="checkbox"/>	_____	_____ X	_____ =	_____
_____ / _____ /	_____ /	_____	<input type="checkbox"/> <input type="checkbox"/> <input type="checkbox"/> <input type="checkbox"/>	_____	_____ X	_____ =	_____
_____ / _____ /	_____ /	_____	<input type="checkbox"/> <input type="checkbox"/> <input type="checkbox"/> <input type="checkbox"/>	_____	_____ X	_____ =	_____
_____ / _____ /	_____ /	_____	<input type="checkbox"/> <input type="checkbox"/> <input type="checkbox"/> <input type="checkbox"/>	_____	_____ X	_____ =	_____

(Level = Points: M=0.2, 1=0.5, 2=0.8, 3=1.6, 4=2.4, 5=3.6, 6=9, 7=14, 8=19, 9=23, 10=29)

IV. \_\_\_\_\_

**REASONS FOR DEPARTURE - MITIGATING CIRCUMSTANCES**  
(reasons may be checked here or written on the scoresheet)

- Legitimate, uncoerced plea bargain.
- The defendant was an accomplice to the offense and was a relatively minor participant in the criminal conduct.
- The capacity of the defendant to appreciate the criminal nature of the conduct or to conform that conduct to the requirements of law was substantially impaired.
- The defendant requires specialized treatment for a mental disorder that is unrelated to substance abuse or addiction, or for a physical disability, and the defendant is amenable to treatment.
- The need for payment of restitution to the victim outweighs the need for a prison sentence.
- The victim was an initiator, willing participant, aggressor, or provoker of the incident.
- The defendant acted under extreme duress or under the domination of another person.
- Before the identity of the defendant was determined, the victim was substantially compensated.
- The defendant cooperated with the State to resolve the current offense or any other offense.
- The offense was committed in an unsophisticated manner and was an isolated incident for which the defendant has shown remorse.
- At the time of the offense the defendant was too young to appreciate the consequences of the offense.
- The defendant is to be sentenced as a youthful offender.
- The defendant is amenable to the services of a postadjudicatory treatment-based drug court program and is otherwise qualified to participate in the program.
- The defendant was making a good faith effort to obtain or provide medical assistance for an individual experiencing a drug-related overdose.

Pursuant to 921.0026(3) the defendant's substance abuse or addiction does not justify a downward departure from the lowest permissible sentence, except for the provisions of s. 921.0026(2)(m).

Effective Date: For offenses committed under the Criminal Punishment Code effective for offenses committed on or after October 1, 1998 and subsequent revisions.

Questions regarding this report should be directed to:

Office of Community Corrections  
Bureau of Interstate Compact and Probation  
& Parole Field Services  
Gregory Roberts, Correctional Services Consultant  
Gregory.Roberts@fdc.myflorida.com  
(850) 717-3485

OR

Office of Strategic Initiatives  
Bureau of Research and Data Analysis  
Jana F. Davis  
co.dcresearch@fdc.myflorida.com  
(850) 717-3432

Florida Department of Corrections  
501 South Calhoun Street  
Tallahassee, Florida 32399-2500



**“INSPIRING SUCCESS BY  
TRANSFORMING ONE LIFE AT A TIME”**



Visit us at:  
[www.dc.state.fl.us](http://www.dc.state.fl.us)



“Like us” on Facebook:  
[facebook.com/FLCorrections](https://facebook.com/FLCorrections)



Follow us on Twitter:  
[@FL\\_Corrections](https://twitter.com/FL_Corrections)



Visit us at YouTube:  
[youtube.com/user/MyFloridaDOC](https://youtube.com/user/MyFloridaDOC)